



10" POS Android Advertising Display

Overview

Integrated Android Media Player

The integrated Android Media Player allows for super fast updates. If required you can also run third party Digital Signage software via the Android PC board.



Commercial Grade

Designed for use in commercial applications this screen can run 24/7. No external buttons or controls to avoid tampering.

Power Over Ethernet

Power the screen using an Ethernet cable or the power cable provided.

Plug and Play

Plug and Play is the easiest and most simple way to upload content to the screen. Simply load images and videos on a USB stick, insert in the display. Wait for your content to copy over and then remove. Your images and videos will now play in a continuous loop

LED Backlight

Improves brightness and contrast as well as improving their lifespan and reducing their power consumption. Unlike other forms of light this technology is mercury free; making it even more eco-friendly. The panel and backlight have a lifespan in excess of 50,000 hours.

Portrait/Landscape Orientation

The screen can be used in either a landscape or portrait orientation depending on your requirement.

Integrated Mounting Solution

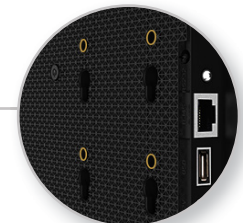
The rear of the display includes an integrated and secure screw based mounting solution.

Network Upgrade

The screen can be upgraded to become a network screen that unlocks a host of new features including remote updates and multiple media zones.

RS-232 Control

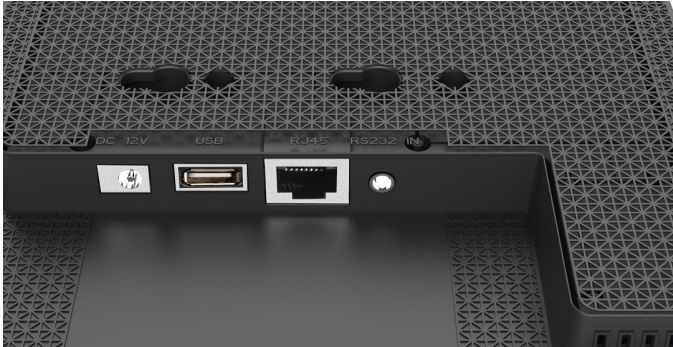
Control, scale and customise your display over long and short distances using RS-232,





Easy Updates

Updating the display is easy. It is done by loading your images and videos onto a USB stick, simply plug the USB into the display, let the media files copy and then removing the stick. No additional hardware or cables are needed. You can also upgrade your display to be networked so you can remotely update your screen via LAN or Wi-Fi via our cloud based CMS.



Power over Ethernet

Your screen can either be powered using the power cable provided or by using an Ethernet cable. This makes the display extremely flexible, allowing you to supply power to the screen using the more convenient of the two methods.



RS-232 Control

Once your screen is connected via RS-232 you can control, scale and customise your display remotely over short and long distances.



Touch Screen Upgrade

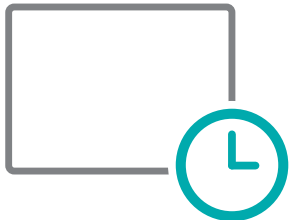
You can upgrade your display to be a PCAP touch screen to increase audience engagement. Your customers can interact with the display to explore a product range or even fill out data capture forms. Adding touch capabilities can really add another dimension to your advertising.





Features

Complimentary Scheduling Software



The display comes with complimentary Scheduling Software so you can determine exactly what content is displayed and when. Create playlists that will automatically display your desired content at pre-determined times.

Scrolling Text



Compliment your content and get your message across with a scrolling text message. With a standalone display this message is manually inputted, with a network display this can also be an RSS feed.

Power Timer



This allows for reduced power usage by automatically powering off in hours that the displays are not required. You can set daily On/Off times for your displays.

24/7 Usage



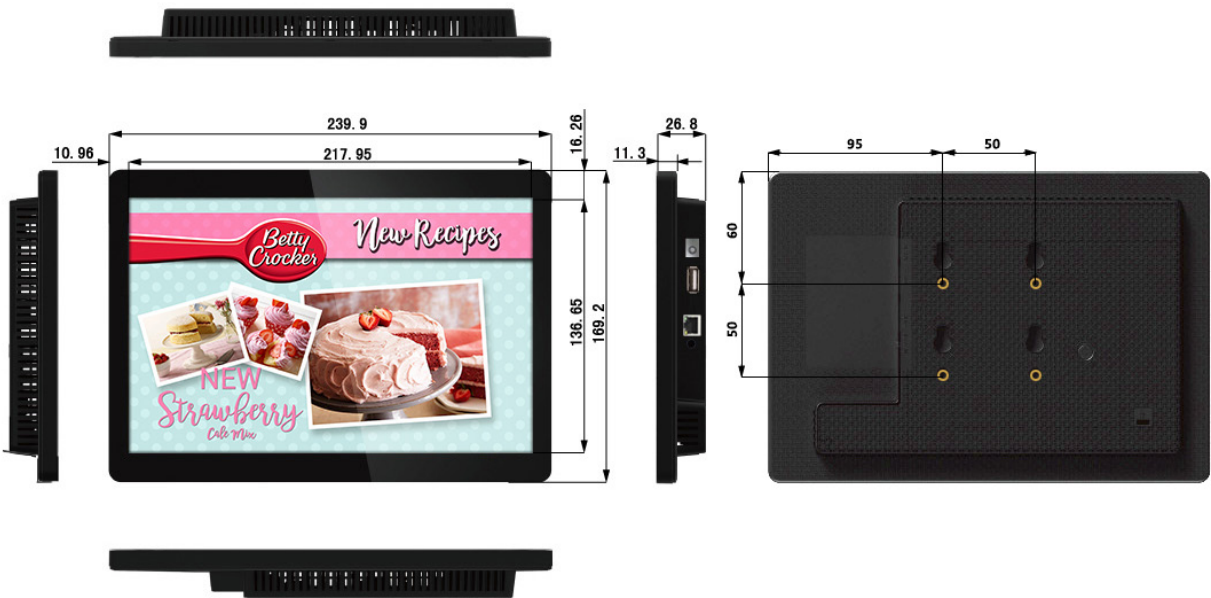
Built with commercial grade panel and components these displays are designed to run 24/7 in constant use; unlike domestic tablets. The panel also has a lifespan of over 50,000 hours of continuous use. They can also be used in landscape or portrait orientation.

Designed For Public Spaces



As well as having a buttonless tempered glass frontage and rounded corners these screens also have an enclosure made from a light-weight polymer so they are ideal for shelf edge and POS displays. They also have a screwless design to achieve a seamless aesthetic and avoid tampering.

Technical Drawing:



Panel	Display Size	10 inch	
	Resolution	1280x800	
	Display Area (mm)	217.95x136.65	
	Aspect Ratio	16:10	
	Brightness (cd/m²)	450	
	Colour	16.7M	
	Colour Depth	10 Bit	
	Viewing Angle	178°	
	Contrast Ratio	800:1	
Audio	Speaker Type	1.5W, 8Ω	
Power	Power Consumption (W)	18	
	Input Voltage	AC110~240V (50Hz~60Hz)	
	PoE Mode	24V Passive	
Mechanical	Unit Size (WxHxD mm)	239.9x169.2x26.8	
	VESA Holes (mm)	50x50	
	Package Size (WxHxD mm)	333x278x75	
	Net Weight (kg)	1.5	
	Gross Weight (kg)	2.2	
	Working Temperature	0 °C to 50 °C	
Feature	Internal Media Player	Media Formats	Video (MPG, AVI, MP4, RM, RMVB, TS), Audio (MP3, WMA), Image (JPG, GIF, BMP, PNG)
		Media Resolution	1920x1080/1080x1920
		Internal Memory	6GB
		CPU	Quad-Core Cortex-A7 , up to 1.3GHz (RK3126)
		GPU	ARM Mali-400MP2
		RAM	1GB DDR3
		ROM	6GB NAND
		USB	USB2.0 HOST x1
		Wi-Fi	802.11b/g/n
		OS	Android 5.0.2
		Graphic Engine	OpenGL ES 1.1/2.0
Accessories	Optional	Cloud Network Software, PCAP Touch Screen Upgrade	