



10" POS Network Android  
Advertising Display



# Overview

## Integrated Android Media Player

The integrated Android Media Player allows for super fast updates. If required you can also run third party Digital Signage software via the Android PC board.



## Commercial Grade

Designed for use in commercial applications this screen can run 24/7. No external buttons or controls to avoid tampering.

## Built in Wi-Fi

Connect the screen to the CMS wirelessly via the integrated Wi-Fi, ethernet or by LAN.

## Plug and Play

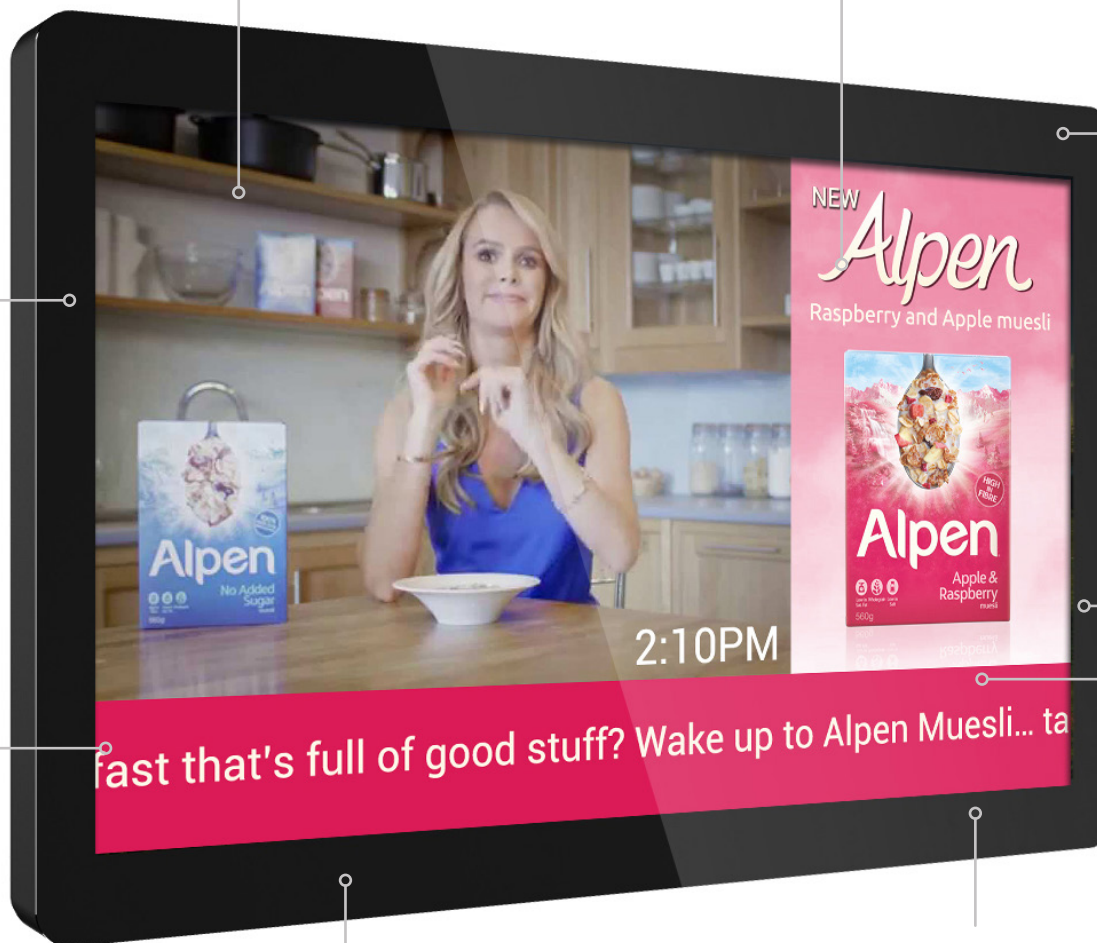
Plug and Play is the easiest and most simple way to upload content to the screen. Simply load images and videos on a USB stick, insert in the display. Wait for your content to copy over and then remove. Your images and videos will now play in a continuous loop

## LED Backlight

Improves brightness and contrast as well as improving their lifespan and reducing their power consumption. Unlike other forms of light this technology is mercury free; making it even more eco-friendly. The panel and backlight have a lifespan in excess of 50,000 hours.

## Portrait/Landscape Orientation

The screen can be used in either a landscape or portrait orientation depending on your requirement.



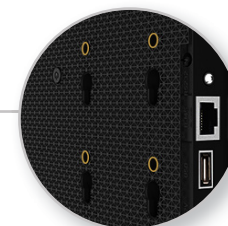
## Power Over Ethernet

Power the screen using an Ethernet cable or the power cable provided.



## RS-232 Control

Control, scale and customise your display over long and short distances using RS-232,



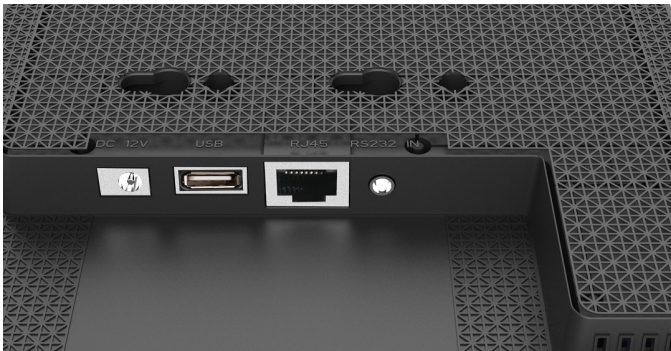
## Integrated Mounting Solution

The rear of the display includes an integrated and secure screw based mounting solution.



## Update Via The Cloud

Updating your screens is extremely simple. Login to [www.MySignagePortal.com](http://www.MySignagePortal.com) to upload media, manage playlists, create your own templates and schedule content for whenever you want; giving you complete control over your network. No special software installation or dedicated PC is required, you can update your screens from anywhere in the world with an internet connection.



## Power over Ethernet

Your screen can either be powered using the power cable provided or by using an Ethernet cable. This makes the display extremely flexible, allowing you to supply power to the screen using the more convenient of the two methods.



## RS-232 Control

Once your screen is connected via RS-232 you can control, scale and customise your display remotely over short and long distances.



## Touch Screen Upgrade

You can upgrade your display to be a PCAP touch screen to increase audience engagement. Your customers can interact with the display to explore a product range or even fill out data capture forms. Adding touch capabilities can really add another dimension to your advertising.

*"Whether you have 1 or 1,000 screens, you can update them all simultaneously via the cloud at the push of a button, allowing you to instantly deliver dynamic advertising content straight to your customers."*



# Features

## All In One Solution

All-in-One

- Screen
- Media Player
- CMS



Our screens have an integrated Android network media player; making installation a breeze. Typically network solutions require you to invest in additional networking hardware - complicating the installation process and the overall system. Hardware and software usually come from different sources which can result in confusion and conflict when identifying any potential faults. In contrast to this, any issues with our screens or Digital Signage software will be dealt with directly by us; one supplier, one solution.

## Designed For Public Spaces



As well as having a buttonless tempered glass frontage and rounded corners these screens also have an enclosure made from a light-weight polymer so they are ideal for shelf edge and POS displays. They also have a screwless design to achieve a seamless aesthetic and avoid tampering.

## 24/7 Usage



24/7  
Usage

Built with commercial grade panel and components these displays are designed to run 24/7 in constant use; unlike domestic tablets. The panel also has a lifespan of over 50,000 hours of continuous use. They can also be used in landscape or portrait orientation.

## Android Media Player



Their integrated Android network media player provides super-fast processing speed for improved communication with the CMS. It also allows you to display live websites; this can be anything from a live web feed from a third party to your social media page. Should you need to you can also run your own software if you already have a CMS solution.

## Power Timer

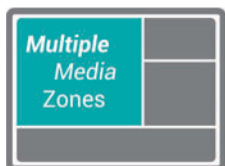


Power  
Timer

This allows for reduced power usage by automatically powering off in hours that the displays are not required. You can set daily On/Off times for your displays.



## Create Custom Layouts



This feature allows you to design your own layout with different media zones for your images, videos, webpages, time, date and also allows you to add a scrolling message or RSS feed. You can even give your layout a corporate “skin” to go around your media zones.

## Schedule Playlists



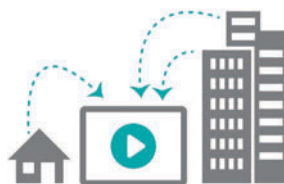
Display what you like, when you like. Create playlists that will automatically display your desired content a pre-determined times and dates. Whatever your scheduling requirements, our system can support them.

## User Management



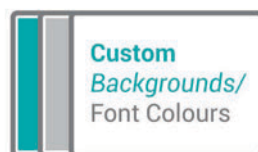
Create as many bespoke user accounts as you like. You may wish to limit some functions of the software to specific users, for example you may wish to allow a receptionist to upload media and have access to the screen in the reception area but nothing else - our system allows full user rights control.

## Ultimate Remote Control



Thanks to the all-in-one nature of the screens you can remotely control functions such as adjusting your screen’s brightness, rebooting or formatting your screen, playing and stopping content, adjusting the volume and scheduling on/off times; a truly centralised solution.

## Custom Background/Font Colours



Customise your colours - great for maintaining brand consistency. You can choose a colour from the palette or enter a Hex code to modify the colour of your background, scrolling text, static text, time and date.

## Multi-Screen Synchronisation



You can synchronise the content across multiple screens that are connected to the same network. This is ideal for advertising networks on escalators or along lengthy corridors.



# Network Features

## Static Text

Allows you to input custom text values

## Office Documents & PDF's

Display PDF files alongside Microsoft Word, Excel and PowerPoint files

## Webpages

Allows you to display a live webpage such as a social media page or live web feed

## Videos

Multiple videos playing in a continuous rolling loop

## Image

Multiple images playing in a continuous rolling loop

## Logo

Brand your layout with your logo which will stay on top of all other zones

## Scrolling Text

Display a ticker tape message or live RSS feed. From here you can adjust the font, size, colour, speed and direction of the text

## Time

Display the time in a variety of formats, sizes and in whatever colour you want

## Date

Display the date in a variety of formats, sizes and in whatever colour you want

## Weather Widget

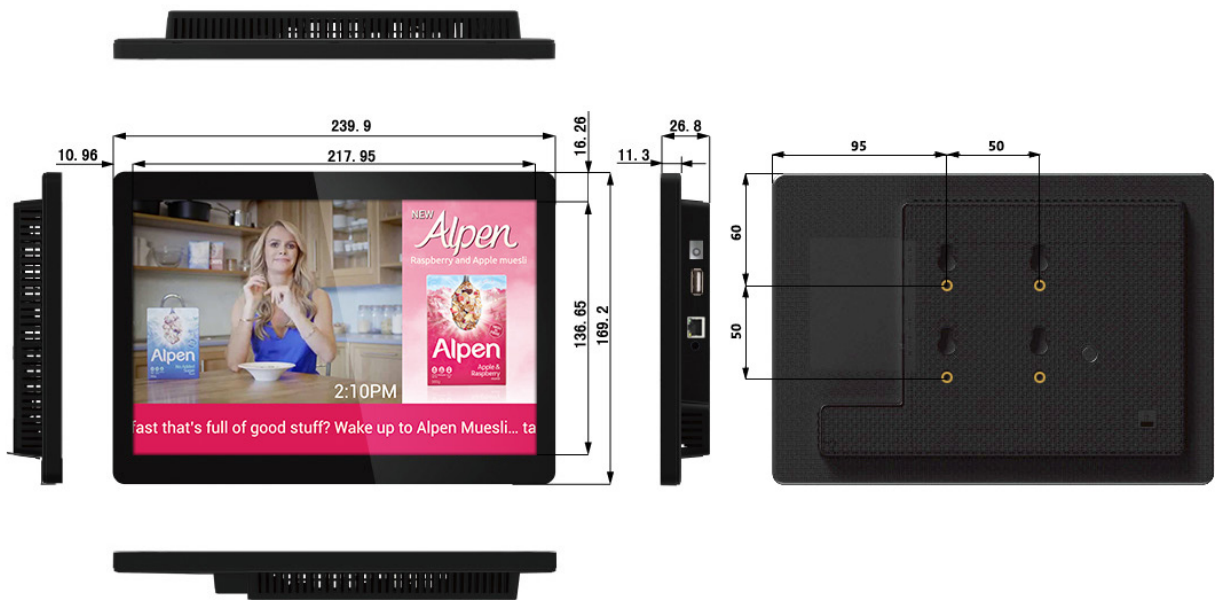
Display a real time weather forecast for up to the next three days

## Background

Set an image or a colour to frame your media zones



Technical Drawing:



Panel	Display Size	10 inch	
	Resolution	1280x800	
	Display Area (mm)	217.95x136.65	
	Aspect Ratio	16:10	
	Brightness (cd/m²)	450	
	Colour	16.7M	
	Colour Depth	10 Bit	
	Viewing Angle	178°	
	Contrast Ratio	800:1	
Audio	Speaker Type	1.5W, 5Ω	
Power	Power Consumption (W)	18	
	Input Voltage	AC110~240V (50Hz~60Hz)	
	PoE Mode	24V Passive	
Mechanical	Unit Size (WxHxD mm)	239.9x169.2x26.8	
	VESA Holes (mm)	50x50	
	Package Size (WxHxD mm)	333x278x75	
	Net Weight (kg)	1.5	
	Gross Weight (kg)	2.2	
	Working Temperature	0 °C to 50 °C	
Feature	Internal Media Player	Media Formats	Video (MPG, AVI, MP4, RM, RMVB, TS), Audio (MP3, WMA), Image (JPG, GIF, BMP, PNG)
		Media Resolution	1920x1080/1080x1920
		Internal Memory	6GB
		CPU	Quad-Core Cortex-A7 , up to 1.3GHz (RK3126)
		GPU	ARM Mali-400MP2
		RAM	1GB DDR3
		ROM	6GB NAND
		USB	USB2.0 HOST x1
		Wi-Fi	802.11b/g/n
		OS	Android 5.0.2
		Graphic Engine	OpenGL ES 1.1/2.0
	Special	Images, Videos, Audio, RSS Feeds, Website/HTML5, Multiple Zones, Background Image, Scrolling Text Message, Static Text, Editable Background Colours, Editable Font Colours, Time and Date, Remote Commands, User Management, Multi-screen Synchronisation	
Accessories	Optional	PCAP Touch Screen Upgrade	