

# Professional LED Video Monitor

## *User's Manual*



Manual Version MP2-B.1

## Safety Instructions



- Please keep the display away from any heat sources such as electric radiators or direct sunlight. Place the display in a stable and well-ventilated place.
- Please handle with care so as to not damage the LCD panel.
- The holes or openings on the display are designed for ventilation. Do not cover or block the ventilation holes or openings with any objects.
- Remove protective covering from the screen before you use the display.
- As the display surface is vulnerable to scratches, avoid touching the surface with sharp pen point.
- Shut off the power supply before cleaning. Use a soft lint-free cloth instead of a tissue to wipe the screen.
- You may use a glass cleaner to clean the product as required. However, never spray the cleaner directly onto the display surface.
- Do not attempt to repair this product yourself! Improperly disassembly of the product may invalidate the warranty and lead to possible danger!

If you have a problem that cannot be solved using the "Troubleshooting" guidelines, please contact your supplier.

# Quick Start Guide (connecting to PC)

This section of the guide is to allow rapid set up and use of the unit. Please refer to the main part of the User Guide for full information on use of the unit.

Please follow the steps detailed below:

- 1. Unpack unit and place in desired location along with PC.
- 2. Connect the screen to the PC via the HDMI Cable (as shown below).



Figure 1 Screen to PC Connections

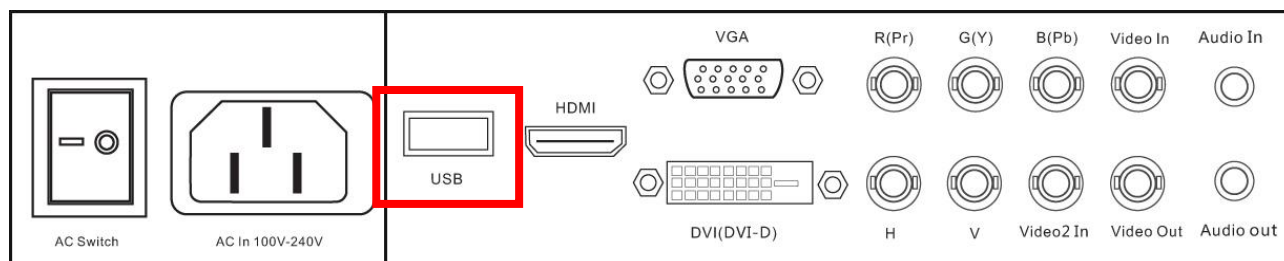
- 3. Power ON the PC.
- 4. Take the power lead from the accessories bag, insert the lead into the screen and connect to mains outlet. Then turn ON by the “AC Switch” located next to the power input.
- 5. If the screen does not display the signal from the PC then connect press the “SOURCE” button on the remote control and navigate to “HDMI1” and press “PLAY”.

PC-RGB
PC-RGB (BNC)
COMPONENT
DVI
<b>HDMI1</b>
HDMI2
AV1
AV2
DMP

## Quick Start Guide (Internal Media Player)

The monitor has a simple built in media player that runs directly from a USB stick. This allows you to display a series of images and videos in a continuous loop. To use the screens internal media player please take the following steps:

1. Begin by loading your image and video files directly onto the root drive (without any folders) of your USB stick in the order that you want them to be displayed. NOTE: To find out what media formats are supported see section 3.4.2 Supported Media Files.
2. Next, plug the USB stick into the USB port of the screen (see figure 2).



**Figure 2 USB Port Location**

1. Your media files will now display in a continuous loop.
2. If they do not automatically start to play please press "MENU" then go to the Time submenu then select DMP Setup. Here you can turn auto play on and edit the duration for which your images display.

## Contents:

1.	Introduction .....	6
1.1	Box Contents .....	6
1.2	Product Overview .....	6
1.3	Serial Control Box (silver remote box) .....	7
1.3.1	Connection to the screen .....	7
1.3.2	Serial Control Box Overview .....	8
1.4	Remote Control .....	9
1.5	Replacing the Remote Control Battery .....	10
2.	Menu Operation .....	11
2.1	Inputs .....	15
3.	Set Up.....	16
3.1	Ventilation .....	16
3.2	Connecting to PC.....	17
3.3	Video Wall setup .....	20
3.4	Internal Media Player .....	22
3.4.1	Usage .....	22
3.4.2	Supported Media Formats .....	23
4.	F.A.Qs and Troubleshooting Guide .....	24
4.1	My Video Monitor is not displaying what is on my PC .....	24
4.1.1	Input Source .....	24
4.1.2	Display/monitor button on PC keyboard .....	24
4.2	My display goes into standby mode .....	25
4.2.1	Power saving function .....	25
4.3	What are my monitor's refresh rates? .....	26
4.4	How do I use my monitor as part of a video wall?.....	27
4.5	My monitor's image is unstable, unfocused or swimming .....	28

# Table of Figures

Figure 1 Screen to PC Connections .....2

Figure 2 USB Port Location..... 3

Figure 3 Product Overview.....6

Figure 4 Serial Control Box to Screen Connection .....7

Figure 5 Screen Inputs.....15

Figure 6 Ventilation Area .....16

Figure 7 Screen to PC Connections .....17

Figure 8 USB Port Location.....22

# 1. Introduction

Congratulations on your purchase of our product. Please read carefully and follow all instructions in the manual before first use.

The product should not be exposed to liquids dripping or splashing and no objects filled with liquids, such as vases, should be placed on the product.

For user convenience, a number of operations can be performed through the remote control.

**Attention:**

1. Do not change any default setting when it is unnecessary.
2. Keep the product far away from water during installation and use.

## 1.1 Box Contents

1xProfessional LED Video Monitor

1xPower Cable

1xHDMI Cable

1xRemote Control (with AAA batteries)

1xCD (User Manual)

**IMPORTANT:** Please retain your screen's packaging for the duration of your warranty.

## 1.2 Product Overview

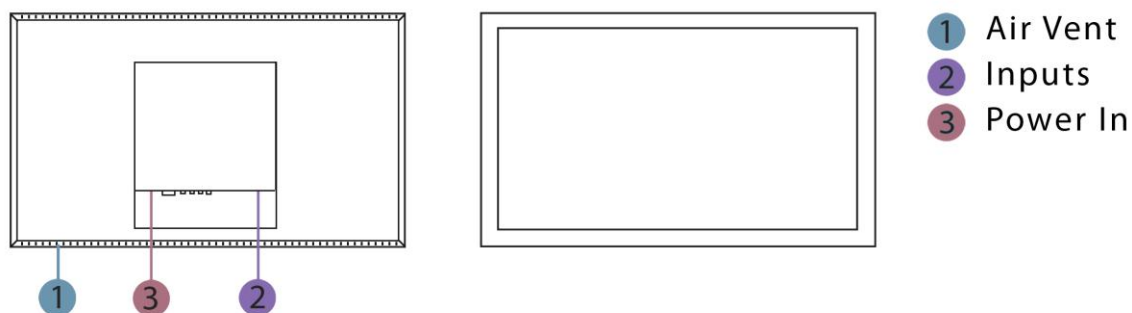
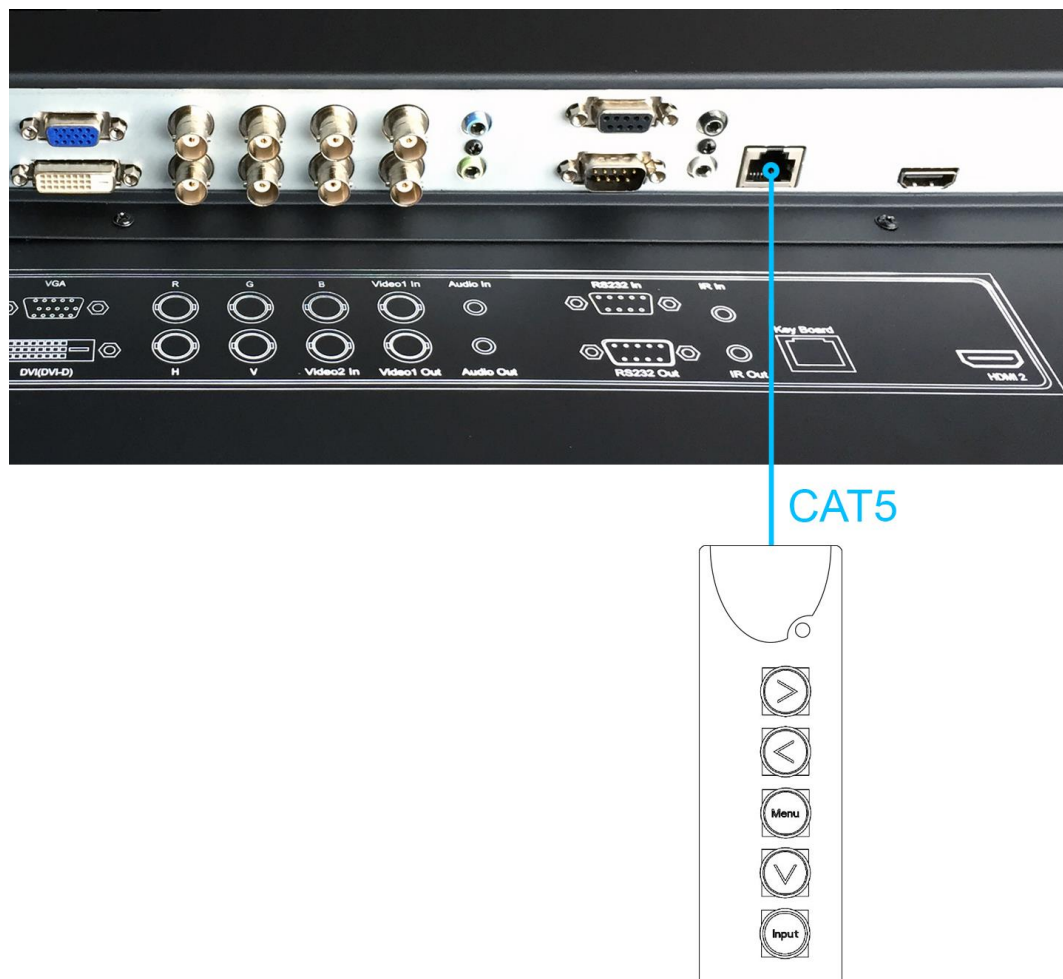


Figure 3 Product Overview

## 1.3 Serial Control Box (silver remote box)

### 1.3.1 Connection to the screen

Before using the Remote Control the Serial Control Box (with the remote's infrared sensor in it) must be connected to the screen.



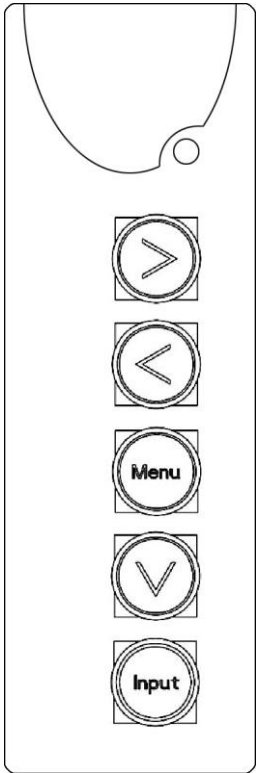
**Figure 4 Serial Control Box to Screen Connection**

Unless Remote Control is faulty it is recommended that you do not attempt to change any settings with the Serial Control Box, only use it as a sensor for the main Remote Control.

Once all required changes have been made the Serial Control Box can be disconnected.



1.3.2 Serial Control Box Overview



Button	Function	
→	Right navigation button	adjust volume
←	Left navigation button	select in OSD menu select signals input adjust values
MENU	Open/close OSD menu or return to previous menu	
↓	Select signal input	
INPUT	Signal input select	

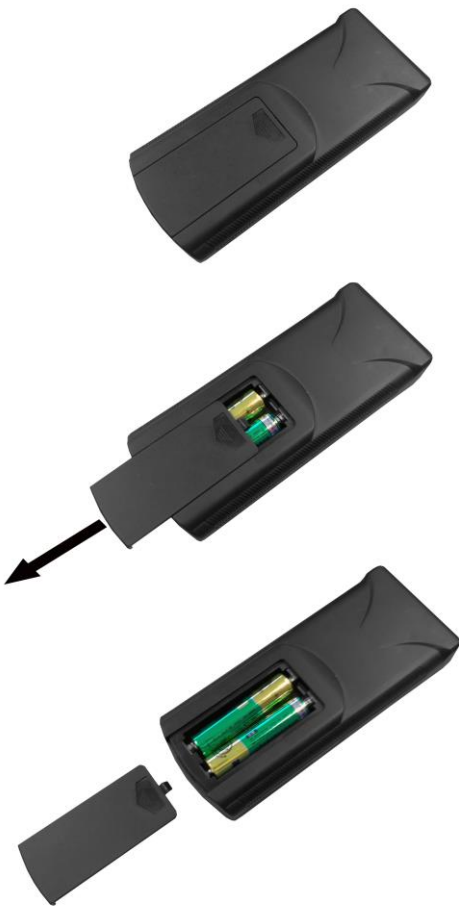
# 1.4 Remote Control



Button	Function
POWER/	Power on or off
MENU	Display settings
SETUP	Menu settings
SOURCE/	Input source
	Up (navigation)
	Left (navigation)
	Right (navigation)
	Down (navigation)
	Play media
	Stop media
	Previous
	Next
	Display settings
	Raise volume
	Lower volume

## 1.5 Replacing the Remote Control Battery

1. Slide the battery cover off, as shown below.
2. Remove the used batteries.
4. Insert the two new AAA batteries with their terminals corresponding to the indicators.
5. Put the cover back on.



## 2. Menu Operation

The Menu includes the following menus: Picture, Sound, Time and Option.

Press "MENU" to bring up the menus, press ←→ to select the desired menu and ↑↓ to select the desired item, press "PLAY" to confirm selection. Press "menu" at any time to go back or exit.

### Picture

Here is where you can edit settings such as brightness, contrast, colour temperature and backlight brightness. Any settings that you change can be reset back to default at any time.

Picture Mode	<Standard>	or Mild/User/Auto/Dynamic	
	User	Contrast	50
		Brightness	50
		Colour	50
		Sharpness	50
		Tint	50
Color Temperature	<Medium>	or Warm/User/Cool	
Aspect Ratio	<16:9>	or Auto/4:3/Zoom1/Zoom2/Just Scan/Panorama/PointToPoint	
Noise Reduction	<Middle>	Or Off/Low/High	
PC Setup			
Backlight	<100>	or 1-100	

---

## Sound

In this menu you can adjust all of the sound settings for your monitor such as the sound mode EQ settings or the left/right balance. Any settings that you change can be reset back to default at any time.

Sound Mode	<Standard>	or Music/Movie/Sports/User
Balance	<0>	-50(left) to +50(right)
Auto Volume	<Off>	or On
Surround Sound	<Off>	or Surround
EQ	120 Hz	50
	500 Hz	50
	1.5K Hz	50
	5K Hz	50
	10K Hz	50

---

## Time

Here you can set a time and date for your screen as well as scheduling daily on/off times for the built in power timer. You can also tell the screen which input source you want it to start on. Your media player settings are also in this section – please ensure auto play is turned on and set your image duration time in seconds.

Clock	<DATE and TIME>	Date Month Year Hour Minute
Off Time	<Off>	Hour Minute
On Time	<Off>	Hour Minute
Temperature	XX	(Current screen temperature)
Fan Active	<30>	(Temperature when internal fans become active)
DMP Setup	Auto Play	<ON> or OFF
	Slide Time	<OFF> or 3-60

## Option

Under this menu are settings like on screen display language, on screen display duration time, and the video wall tiling settings. You can also restore all of the menus default settings and lock your screen so as you have to enter a password to access any of the menus.

OSD Language	<English>	or Français/Español/ Português/Arabic/中文
Restore Default Setting	(Resets menu settings to default)	
Blending	<Low>	or Middle/High/Off
OSD Duration	<Off>	or 5sec/10sec/15sec
Multi Setup	Board ID	1
	Current X	1
	Current Y	1
	Total X	1
	Total Y	1
Multi Crop	Left Edge	0
	Up Edge	0
	Right Edge	0
	Down Edge	0
Copy Start		
Lock System	<Off>	or On (Password – 1842)

### Switching between inputs

One crucial feature that does not appear on the Main Menu is selecting the input source. This is done by first pressing "SOURCE" and then scrolling down to the desired input source and select by pressing "PLAY".

PC-RGB
PC-RGB (BNC)
COMPONENT
DVI
<b>HDMI1</b>
HDMI2
AV1
AV2
DMP

## 2.1 Inputs

VGA (PC-RGB) – Video Graphics Array Signal Input

HDMI1 – High Definition Multimedia Interface Signal Input (HD)

HDMI2 – High Definition Multimedia Interface Signal Input (4K)

DVI – Digital Video Interface

YPbPr – Component Signal Input

Video In (AV) – Composite Signal Input (X2)

BNC – Bayonet-Neill-Concelman

RS232 – Serial communication transmission

USB (DMP) – Universal Serial Bus (for internal media player)

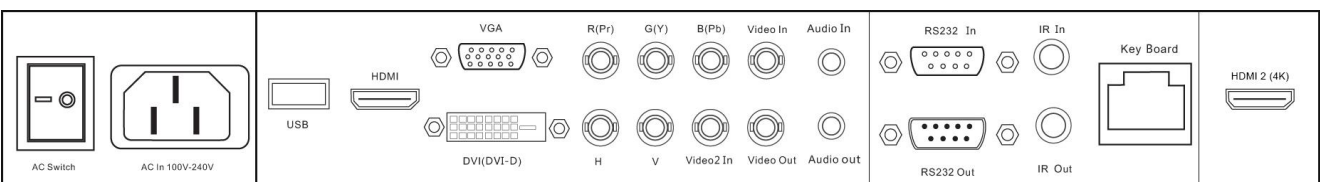


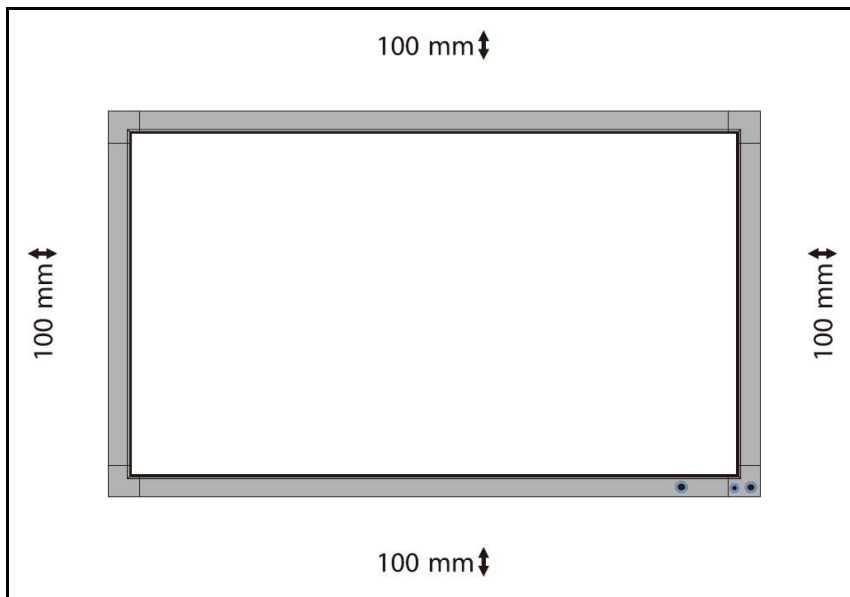
Figure 5 Screen Inputs



## 3. Set Up

### 3.1 Ventilation

If you are mounting your monitor in an enclosed space or recessed area please leave adequate room between the monitor and the enclosure to allow heat to disperse. We recommend the following the following space for ventilation.



**Figure 6 Ventilation Area**

If you are using your monitor as part of a video wall or you are mounting them next to one another please compensate for this by allowing more ventilation area at the rear of the screens.

### 3.2 Connecting to PC

The Video Monitor must be connected to the PC via a visual signal input. The recommended visual connection is via a HDMI Cable meaning that the display acts like a monitor for the PC – displaying whatever contents is on the PC.



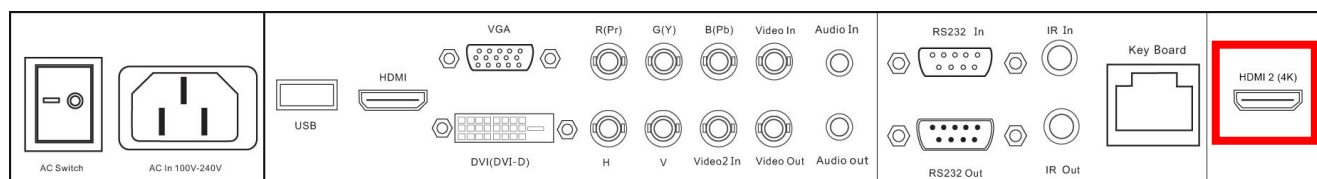
**Figure 7 Screen to PC Connections**

Connect the screen to the PC via the HDMI cable (as shown above). Once this connection has been made and the PC is powered ON take the power lead and insert it into the screen and connect to mains outlet. Then turn ON by the “AC Switch” located next to the power input.

Before taking any more steps ensure that the screen is sourcing its display from the PC. This is done by first pressing "SOURCE" and then navigating to the desired input source (HDMI1) and select by pressing "PLAY".

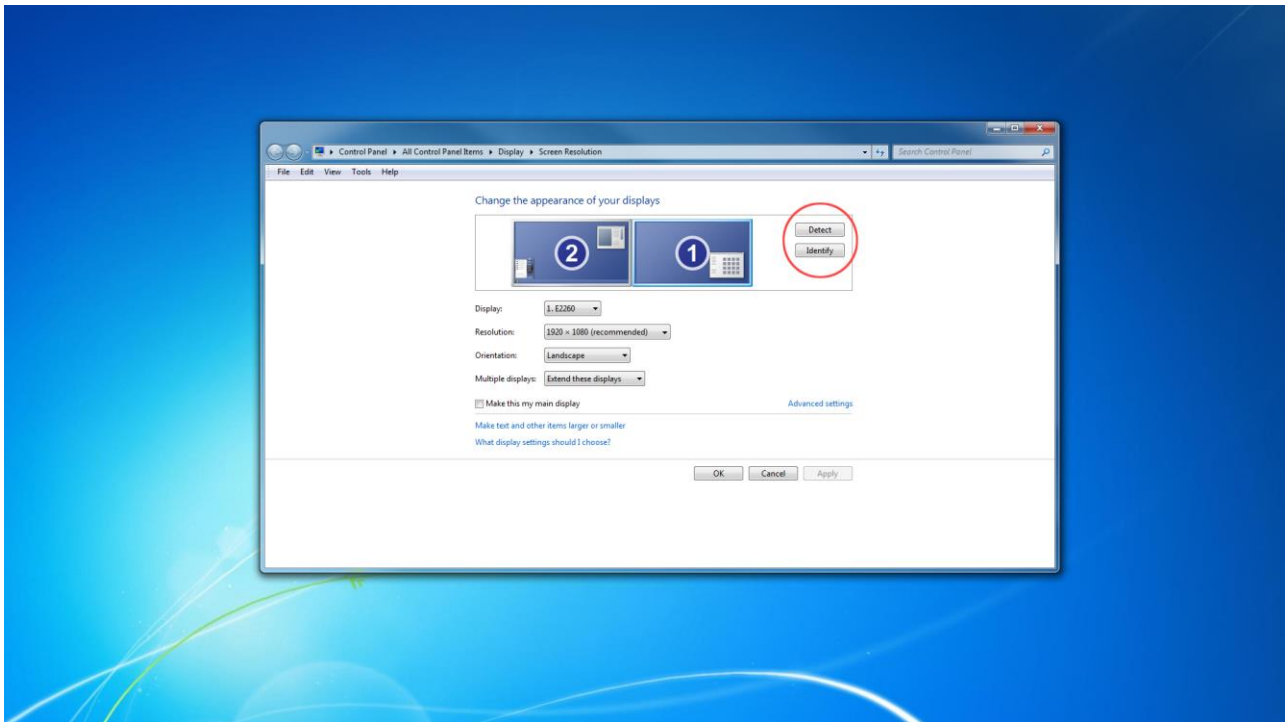
PC-RGB
PC-RGB (BNC)
COMPONENT
DVI
<b>HDMI1</b>
HDMI2
AV1
AV2
DMP

If you wish to display a 4K signal please use the HDMI2 input, as shown below:



**IMPORTANT:** If the Video Monitor is the only monitor connected to your PC **NO NOT** take the following step. Only proceed with the following if you are using a laptop or another monitor is connected to your PC.

Access the display options from your Control Panel or right-click on your Desktop and choose "Properties" (then "Settings") or "Screen resolution". You should now click "Detect" to allow the PC to discover the Video Monitor then "Identify" to establish which display is the Video Monitor.



Select the display that corresponds with the Video Monitor display then check the box “Make this my main display” or “Use this device as the primary monitor”. This will make the Video Monitor display your main monitor.

### 3.3 Video Wall setup

If you want to use your screen as part of a video wall you must give Multi Setup values settings in the "Option" menu. The following is an example of a 3x3 video wall:

BOARD ID	1
CURRENT X	1
CURRENT Y	1
TOTAL X	3
TOTAL Y	3

	1	2	3	→X
1	<b>1,1</b>	2,1	3,1	
2	1,2	2,2	3,2	
3	1,3	2,3	3,3	
↓Y				

BOARD ID	1
CURRENT X	2
CURRENT Y	1
TOTAL X	3
TOTAL Y	3

	1	2	3	→X
1	1,1	<b>2,1</b>	3,1	
2	1,2	2,2	3,2	
3	1,3	2,3	3,3	
↓Y				

BOARD ID	1
CURRENT X	3
CURRENT Y	1
TOTAL X	3
TOTAL Y	3

	1	2	3	→X
1	1,1	2,1	<b>3,1</b>	
2	1,2	2,2	3,2	
3	1,3	2,3	3,3	
↓Y				

			1	2	3	→X
BOARD ID	1	1	1,1	2,1	3,1	
CURRENT X	1	2	1,2	2,2	3,2	
CURRENT Y	2	3	1,3	2,3	3,3	
TOTAL X	3					
TOTAL Y	3					

↓  
Y

...and so on.

The “Multi Crop” settings are for fine calibration of a video wall. This setting is to eliminate any black edges that you may have. In most cases you should not need to use this function.

- “LEFT EDGE” stretches the overall display horizontally from the left hand side.
- “UP EDGE” stretches the overall display vertically from above.
- “RIGHT EDGE” stretches the overall display horizontally from the right hand side.
- “DOWN EDGE” stretches the overall display horizontally from below.

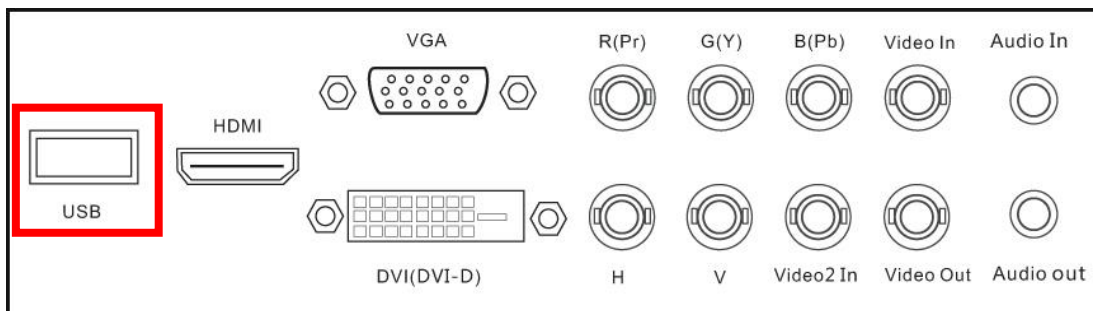
Note: This function is only available when the display is being used as part of a video wall.

## 3.4 Internal Media Player

### 3.4.1 Usage

The monitor has a simple built in media player that runs directly from a USB stick. This allows you to display a series of images and videos in a continuous loop.

Begin by loading your image and video files directly onto the root drive (without any folders) of your USB stick in the order that you want them to be displayed. To find out what media formats are supported see section 3.4.2 Supported Media Files. Next, plug the USB stick into the USB port of the screen (see figure 7).



**Figure 8 USB Port Location**

Your media files will now display in a continuous loop. To change image duration time please see the Time section of the Main Menu.

### 3.4.2 Supported Media Formats

Media Type Supported File Type		
Image	JPEG	Baseline
Video	MPG, AVI, MP4	MPEG-1, MPEG-2, MPEG-4, Xvid, DivX, H264

1. This unit does NOT support WMV or FLV video file types.
2. This unit does NOT support Sony ATRAC3, DTS or DTS-HD audio file types.

Note: Video and image files should be a maximum 1920x1080 resolution (16:9 aspect ratio).



## 4. F.A.Qs and Troubleshooting Guide

### 4.1 My Video Monitor is not displaying what is on my PC

#### 4.1.1 Input Source

Your monitor may be sourcing its display from another input. First ensure that your screen is connected to your PC (or other video source) via one of the inputs. Next, press "SOURCE" and then navigate to the input source that corresponds with the one you are using and select by pressing "PLAY".

PC-RGB
PC-RGB (BNC)
COMPONENT
DVI
HDMI1
HDMI2
AV1
AV2
DMP

#### 4.1.2 Display/monitor button on PC keyboard

If you are sourcing your video signal from a PC your keyboard may have a display/monitor button on it, especially if you are using a laptop. If your Video Monitor does not display the content of the PC try hitting this button before contacting your supplier.

## 4.2 My display goes into standby mode

### 4.2.1 Power saving function

If your Video Monitor is powered ON without being connected to a PC via a visual signal (e.g. VGA, DVI etc.) it will automatically go into standby mode within a few minutes. If your Video Monitor is not being supplied with a video signal it will go to standby to ensure that video signal connection is connected properly. Also you must ensure that the Video Monitor is accessing the correct input. To do this you must press "SOURCE" and then navigate to the input source that corresponds with the one you are using and select by pressing "PLAY".

PC-RGB
PC-RGB (BNC)
COMPONENT
DVI
HDMI1
HDMI2
AV1
AV2
DMP

### 4.3 What are my monitor's refresh rates?

If you are running your signal from your PC then some video cards with a pixel clock over 162MHz may not display the image correctly. Normally however your monitor will display the image correctly by adjusting the factory preset timing signal automatically.

Resolution	Scanning frequency	
	Horizontal	Vertical
680 x 480	31.5 kHz	60 Hz
800 x 600	37.9 kHz	60 Hz
1024 x 768	48.4 kHz	60 Hz
1280 x 768	48 kHz	60 Hz
1360 x 768	48 kHz	60 Hz
1280 x 1024	64 kHz	60 Hz
1600 x 1200	75 kHz	60 Hz
1920 x 1080	67.5 kHz	60 Hz

**IMPORTANT:** If you are using with a Macintosh PowerBook, set "Mirroring" to Off on your PowerBook. Refer to your Macintosh's owner's manual for more information about your computer's video output requirements and any special identification or configuration your monitor's image and monitor may require.

## 4.4 How do I use my monitor as part of a video wall?

If you want to use your screen as part of a video wall you must give Multi Setup values settings in the "Option" menu. The following is an example of a 3x3 video wall:

BOARD ID	1
CURRENT X	1
CURRENT Y	1
TOTAL X	3
TOTAL Y	3

	1	2	3	→X
1	<b>1,1</b>	2,1	3,1	
2	1,2	2,2	3,2	
3	1,3	2,3	3,3	
↓Y				

BOARD ID	1
CURRENT X	2
CURRENT Y	1
TOTAL X	3
TOTAL Y	3

	1	2	3	→X
1	1,1	<b>2,1</b>	3,1	
2	1,2	2,2	3,2	
3	1,3	2,3	3,3	
↓Y				

BOARD ID	1
CURRENT X	3
CURRENT Y	1
TOTAL X	3
TOTAL Y	3

	1	2	3	→X
1	1,1	2,1	<b>3,1</b>	
2	1,2	2,2	3,2	
3	1,3	2,3	3,3	
↓Y				

			1	2	3	→X
BOARD ID	1	1	1,1	2,1	3,1	
CURRENT X	1	2	1,2	2,2	3,2	
CURRENT Y	2	3	1,3	2,3	3,3	
TOTAL X	3					
TOTAL Y	3					

↓  
Y

...and so on.

The “Multi Crop” settings are for fine calibration of a video wall. This setting is to eliminate any black edges that you may have. In most cases you should not need to use this function.

- “LEFT EDGE” stretches the overall display horizontally from the left hand side.
- “UP EDGE” stretches the overall display vertically from above.
- “RIGHT EDGE” stretches the overall display horizontally from the right hand side.
- “DOWN EDGE” stretches the overall display horizontally from below.

Note: This function is only available when the display is being used as part of a video wall.

#### 4.5 My monitor's image is unstable, unfocused or swimming

Firstly check that the video signal cable should be firmly connected to the monitor and the PC. Next, check the monitor and your display card with respect to compatibility and recommended signal timings.

If your text is blurred, reformat the video mode to “non-interlaced” and use 60Hz refresh rate.