

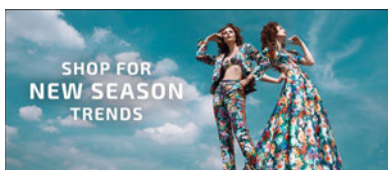
# Indoor LED Video Wall

P1.9 | P2.5 | P3.1 | P3.8



## Stunning Image Quality

State of the art SMD-LED technology delivers stunning image quality across the seamless display; certain to garner attention. With advanced video processing technology to produce accurate and vibrant colours with no distortion.



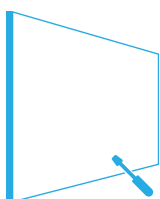
## High Brightness

Equipped for all indoor ambient light conditions the 800cd/m2 high brightness display is sure to shine bright and demand your audience's attention.



## Easy Front Maintenance

Through an intuitive and easy-to-use maintenance system the LED Video Wall can be serviced from the front of the display. The LED modules can be removed quickly and efficiently for convenient maintenance.



## End-to-End Project Management

Every LED Video Wall is unique and each comes with its own challenges. We are here to advise and guide you through every step - from design to installation and even providing maintenance we can provide full end-to-end project management where required.



Design

>>

Installation

>>

Maintenance

## Other Features

### Lightweight and Slim Design

Each cabinet weighs just 24kg and has a depth of 40mm meaning that the reduced weight reduces stress on the mounting structure.



### Complete Quality Control

Every step, from production to installation, goes through a strict quality control procedure while quality calibration guarantees consistent image quality across the whole display.



### Fanless Design

The Indoor LED Video Walls are noise free while in operation thanks to their fanless design. Unlike outdoor applications, which involve lots of ambient noise, indoor projects require a silent solution.



### Easy Installation

Their light and compact design as well as magnetic modules, positioning pins and simple cabinet structure make them ideal for either permanent installations or rental jobs.



### Remote Updates from the Cloud

Take complete control of your LED Video Wall's content with our CMS system. Publish and monitor your content from anywhere in the world via our online portal.



### Optimised Indoor Viewing Distances

The Indoor LED Video Walls are designed for close range viewing distances with a variety of pixel pitch options depending on your budget and requirements.



### Ultra High Contrast Ratio

With an ultra-high contrast ratio of 6,000:1 the LED Video Walls deliver deeper blacks, vivid colours and clear visibility across the display without sacrificing brightness.



### Bespoke Video Wall Display

Make the most of their modular design as you sculpt the LED Video Wall to fill your space and stand out from the crowd.



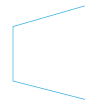
# Key Features



SMD TECHNOLOGY



MODULAR DESIGN



SEAMLESS VIDEO WALL



ULTRA HIGH CONTRAST RATIO



QUICK AND EASY INSTALL



LIGHTWEIGHT DESIGN



LOW HEAT EMISSIONS

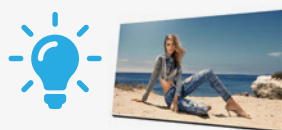


EASY TO USE CMS

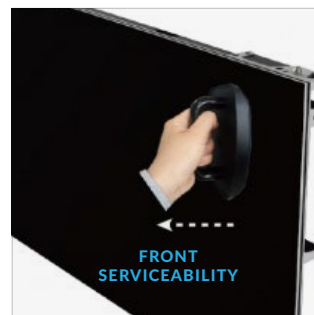


ALL-IN-ONE DISPLAY

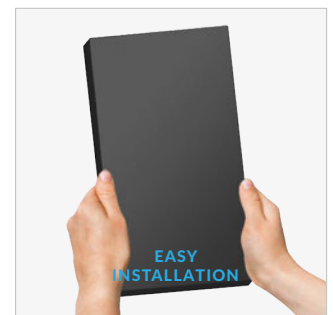
800cd/m<sup>2</sup>



HIGHER BRIGHTNESS DISPLAY



FRONT SERVICEABILITY



EASY INSTALLATION



# Specification Table

		P1.9	P2.5	P3.1	P3.8
LED Display	Pixel Pitch (mm)	1.9mm	2.54mm	3.17mm	3.81mm
	LED Type	Black SMD2020 3-in-1			
	Pixel configuration	1R1G1B			
	Brightness (cd/m <sup>2</sup> )	800cd/m <sup>2</sup>			
	Refresh rate	≥1920 Hz			
	Contrast Ratio	6000:1			
	Viewing angle - Horizontal	160°			
	Viewing angle - Vertical	160°			
	Grayscale	14 bit			
	Frame rate	60 fps			
	Maintenance	Front Access Only			
Cabinet	Large Cabinet Size (mm)	1220x343.125x40			
	Medium Cabinet Size (mm)	915x343.125x40			
	Small Cabinet Size (mm)	610x343.125x40			
	Large Cabinet Net Weight (Kg/m <sup>2</sup> )	24			
	Medium Cabinet Net Weight (Kg/m <sup>2</sup> )	18			
	Small Cabinet Net Weight (Kg/m <sup>2</sup> )	12			
Power	Input Voltage	AC220/110 ± 10%, 47~63Hz			
	Average Power Consumption	272W/m <sup>2</sup>			
	Maximum Power Consumption	680W/m <sup>2</sup>			
Environmental	IP Rating	IP40			
	Operating Temperature	-20°C to +45°C			
	Operating Humidity	10% to 90%			
	Lifetime	100,000 hours			
Accessories	Included	TBC			
	Optional	TBC			
Warranty	Warranty Period	3 Year Warranty			
	Technical Support	Lifetime			

