

NexEsign

Transparent glass LED displays



Transparent & Thin



High-tech design



Cloud base services



Green / Eco-friendly



Water-resistant & shatter-proof



Inter-Linkable

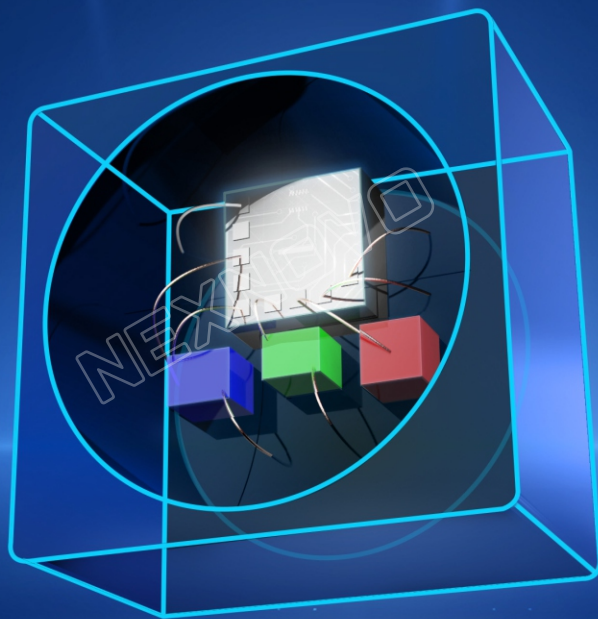


NexEsign is an ultra-transparent glass LED display using NEXNOVO's patented integrated-IC technology and nano film circuits. This display has an all-in-one cloud base content creation & management application, allowing a complete central administration. It is the new generation of smart high-tech displays that brings innovation to any and most markets requiring efficient and avant-gard signage.

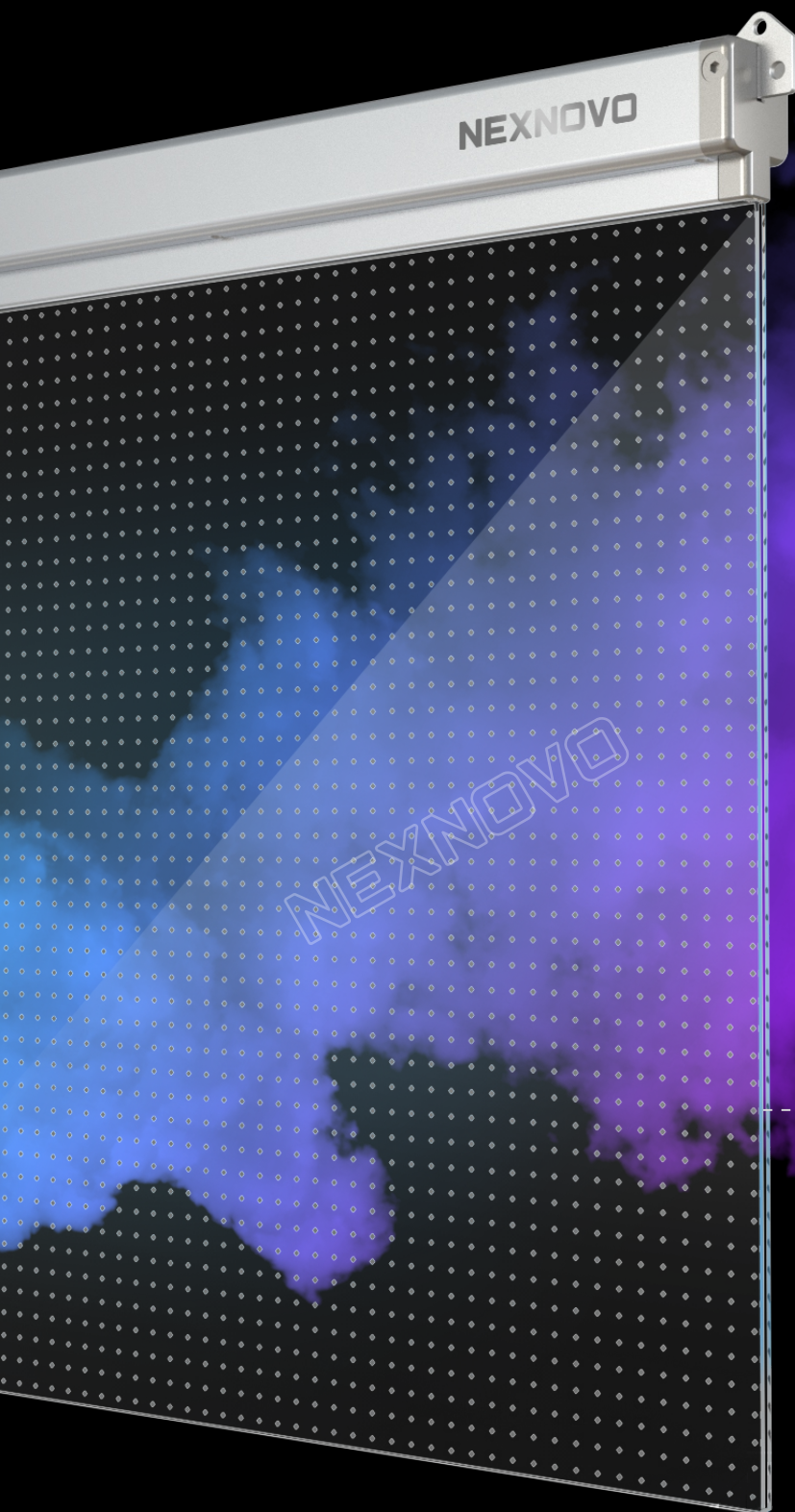
Core technology

Research and development of integrated-IC technology

We make brighter displays
We make displays more vivid and responsive



Light, Transparent & Thin



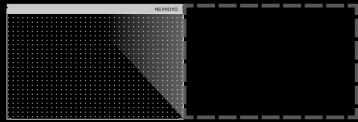
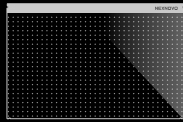
10 kg/panel

92% Transparency

Simple, sleek and see-through daylight friendly displays.

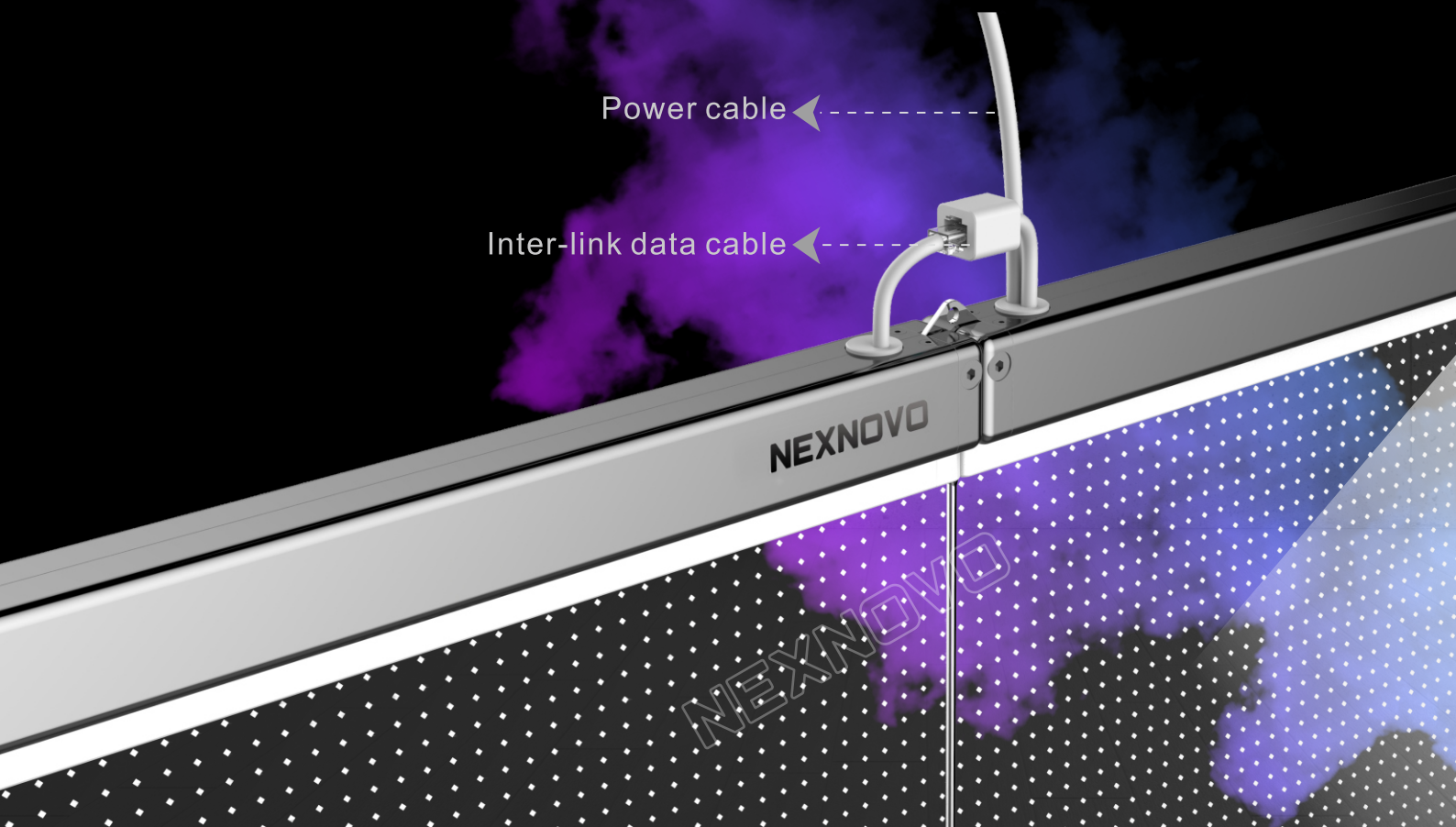
7.5mm slim

Inter-Linkable



Easy installation

Ease and simplicity of operation



Power cable ←

Inter-link data cable ←

NEXNOVO

NEXNOVO



LET'S DO IT.

Easy and centralized management

- ◆ NexCloud services or HDMI input.
- ◆ NexCloud is a web platform where publishing content is made easy.
- ◆ “One-click” easy publish and remote management on your mobile phone or on the web portal.
- ◆ Professional customized content services are available.



Create & Publish yourself

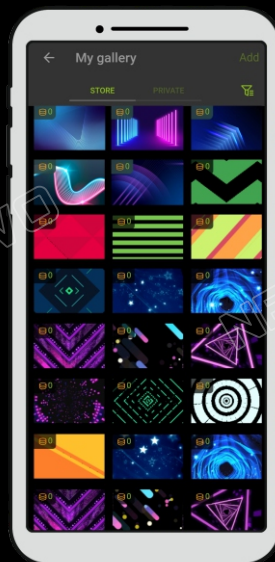
Multiple libraries of content are available, such as;
fonts, backgrounds, animations and many more templates.
Decide on a template, customize, and then publish!
Making content designing a breeze.
Be your own design specialist.



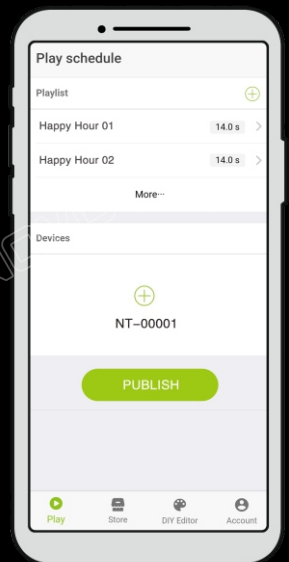

Text editing




Images Library




Background Library

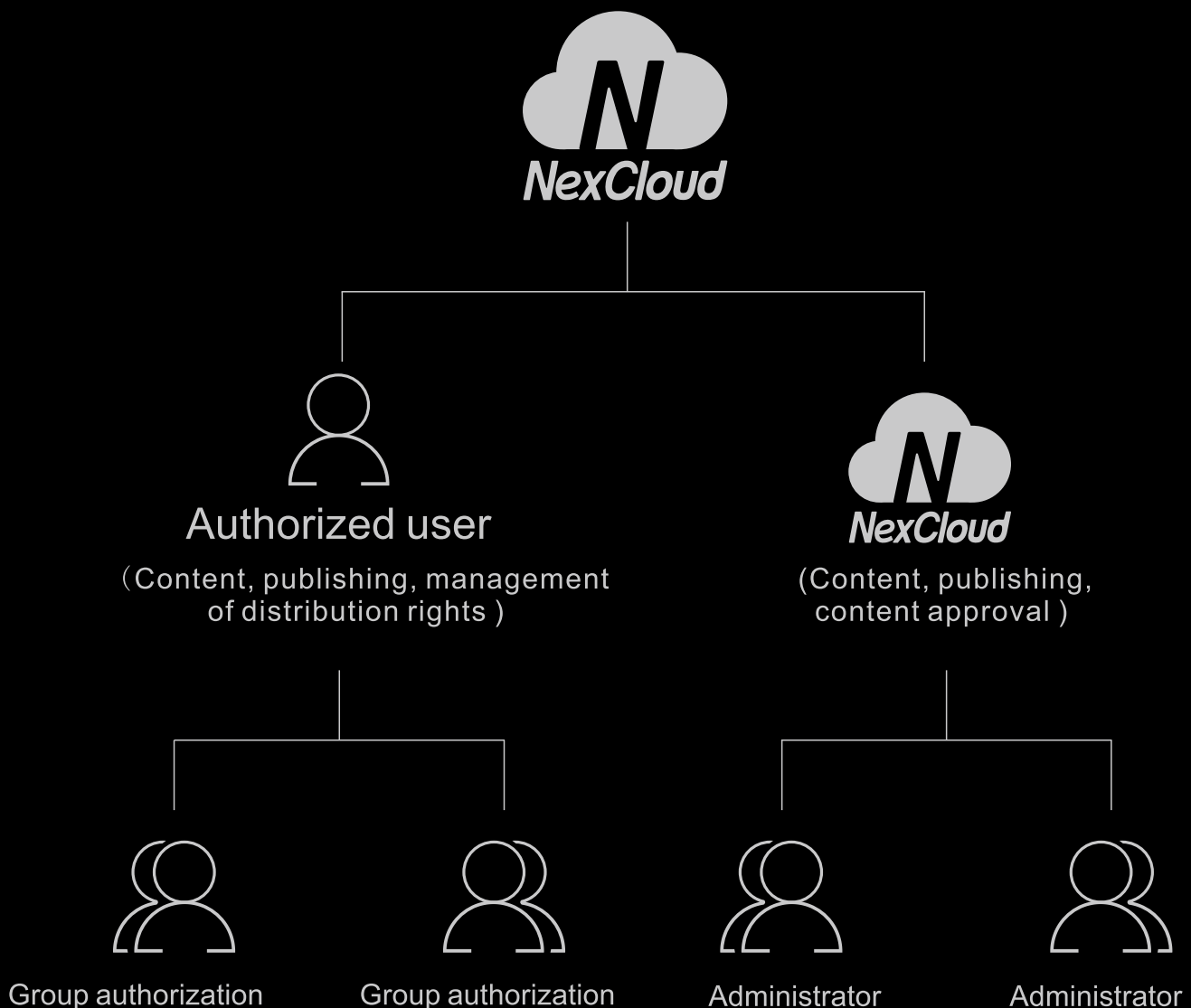


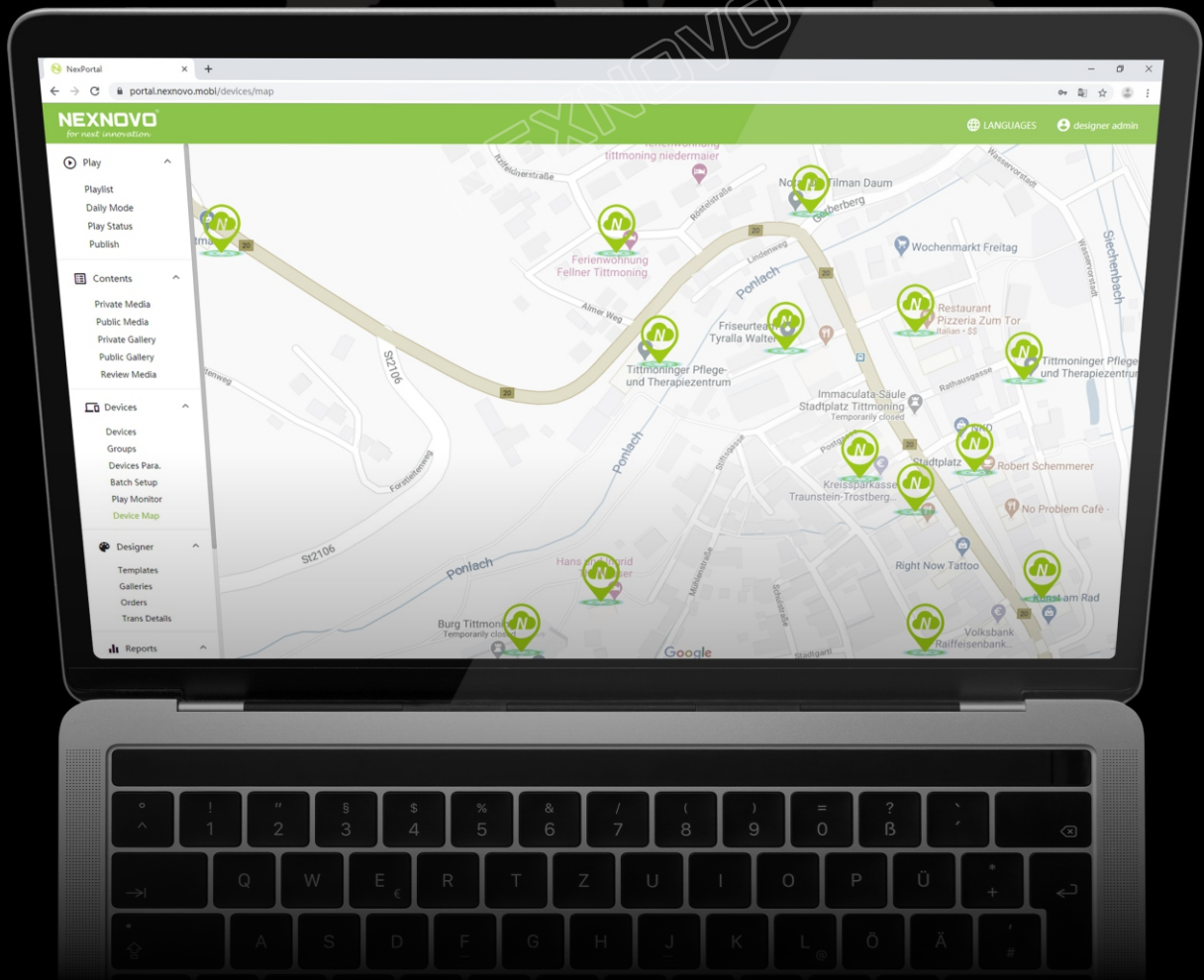

Publish



Stay in control with centralized management

Support flexible and simple hierarchical policies.
Never has content publishing been so flexible and safe.





Real-time display locator

Geographic positioning of your displays can be seen directly on the application

A smart application for an innovative display

NexESign is versatile, use it for simple way finders, critical information displays or just amazing advertisers. In environment such as; airports, train stations, retail stores, healthcare, education system, corporate offices, food and beverage industry, tourist sites and much more.





Specifications



Model	NT
LED model	NEX2020-T
Display size (WxH) (mm)	800 x 500
Cabinet size (WxH) (mm)	800 x 575
Pixel density (dot)	3648
Pixel pitch (mm)	10.52 x 10.42
Brightness (cd/panel)	5000
Max. power (W/panel)	240
Ave. power (W/panel)	100
Transparency	92%
Weight (kg/panel)	10
Ingress protection	IP65
Refresh rate (Hz)	≥3840

NEXNOVO[®]

for next innovation



Head Office
No. 8, Qinglan Road 1, Pingshan District, Shenzhen, China
Tel: 0755-33078008
E-mail: sale@nexnovo.com
<http://www.nexnovo.com>

© 2020 NEXNOVO TECHNOLOGY CO., LTD
All rights reserved. Specifications are subject to change without notice (V1.0)