

Android Network Display

Available Sizes

19", 22", 32", 43", 50", 55"



Overview

Our Android Network Displays have an integrated Android network media player; making installation a breeze. Typically network solutions require you to invest in additional networking hardware – complicating the installation process and the overall system

Key Features



Free Wall Mount



Integrated android player



L.E.D Backlight



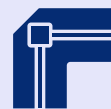
Eco Power-Timer



Adaptable Orientation



Cloud-based CMS



Free Wall Mount

A super slim wall mount is included with your screen at no extra cost; ensuring that you have complete out-of-the-box digital signage solution.



Eco Power timer

The eco-friendly power timer allows you to assign daily or weekly on and off times for your screen. The screen is only in use when it needs to be; improving your environmental efficiency.



Integrated Android player

The integrated Android Media Player allows for super fast updates. If required you can also run third party Digital Signage software via the Android PC board.



Connectivity

Connect your Wall-Mounted Slimline Network Screens to the internet wirelessly via Wi-Fi or via a Local Area Connection. If internet connection is not available a 3G router can be Built into the screen

Interactive Displays Ireland

 Dromone, Oldcastle, Co. Meath, Ireland

 0449672855  www.interactivedisplays.ie



IPS Panels

Superior image quality and colour depth at 178° ultra wide viewing angle in both landscape and portrait orientations and with no blackening defect.



Manage Users & Review Logs

limit some functions of the software or zones of the screens to specific users. allow others to have access to the screen our system allows full user rights control.



Cloud Based CMS

Updating your screens is extremely simple. Login to app.screenfusion.ai to upload media, manage playlists, create your own templates and schedule content for whenever you want.



Tablet-like Styling

designed to be in constant use 24/7 for over 70,000 hours. Their buttonless tempered glass face, rounded corners, steel enclosure with super slim profile and aluminium surround all add to their eye-catching tablet-like aesthetics.



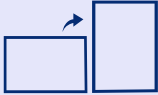
Remote Screen Functions

Access functions of your screens via the CMS, such as setting On/Off times for each of your screens and adjusting display settings like Brightness, Contrast and Colour; a truly centralised solution.



Create Custom Layouts

Design your own layout with different media zones for your images, videos, webpages, time, date and also allows you to add a scrolling message or RSS feed.



Adaptable Orientation

high-quality display experience with exceptional viewing angles in portrait & Landscape orientation. With no blackening defects and vivid colours, it offers clarity and crispness for the user.



LED Backlight

Thanks to their LED backlight these displays offer improved brightness and contrast as well as drastically improving their lifespan & reducing their power consumption.

Application

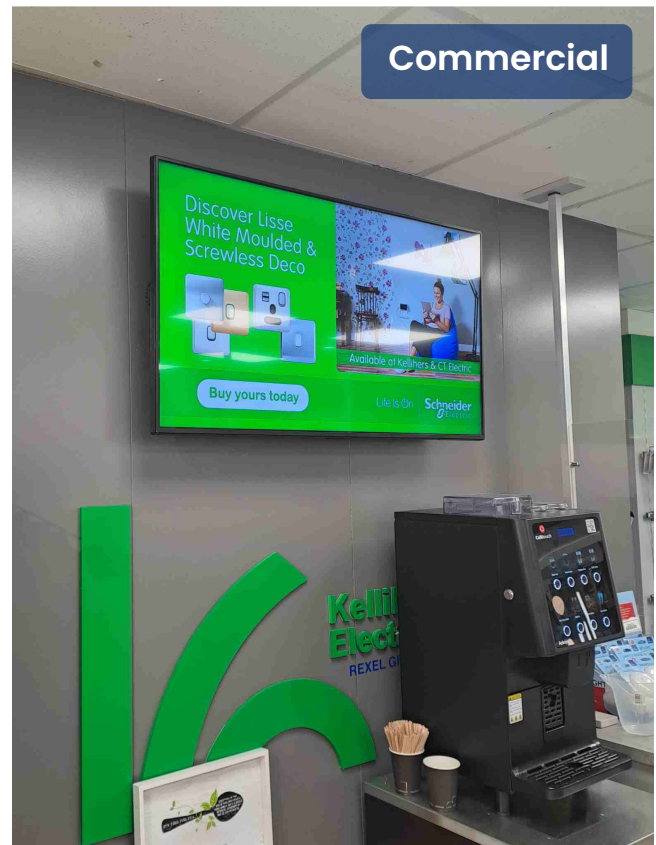


Retail



Hospitality

Commercial



Specifications

19"

22"

32"

43"

50"

55"

Model: PF19HD6

Display Area: 408.6×229.6

Unit Size: 501×322×36

Package Size: 580×430×120

Vesa Holes: 100×100/150×100

Net Weight: 5.9kg

Gross Weight: 7.8kg

Power Consumption: 16watts

Speaker Type: 2W, 5Ω (x2)

19"

22"

32"

43"

50"

55"

Model: PF22HD6

Display Area: 478×269

Unit Size: 590×383×33.7

Package Size: 655×485×120

Vesa Holes: 100×100

Net Weight: 8.5kg

Gross Weight: 10.3kg

Power Consumption: 22watts

Speaker Type: 2W, 5Ω (x2)

19"

22"

32"

43"

50"

55"

Model: PF32HD6

Display Area: 699×394

Unit Size: 814×504×63

Package Size: 956×605×164

Vesa Holes: 400×200

Net Weight: 13.1kg

Gross Weight: 16.9kg

Power Consumption: 52watts

Speaker Type: 5W, 8Ω (x2)

19"

22"

32"

43"

50"

55"

Model: PF43HD6

Display Area: 942×525

Unit Size: 1045×638×63

Package Size: 1175×775×165

Vesa Holes: 400×400

Net Weight: 22.8

Gross Weight: 30.2kg

Power Consumption: 65watts

Speaker Type: 5W, 8Ω (x2)

Specifications

19"	22"	32"	43"	50"	55"
Model: PF50HD6					
Display Area: 1075.6×605.4					
Unit Size: 1199×736×44					
Package Size: 1357×867×176					
Vesa Holes: 400×400					
Net Weight: 28.05kg					
Gross Weight: 37kg					
Power Consumption: 75watts					
Speaker Type: 5W, 8Ω (x2)					

19"	22"	32"	43"	50"	55"
Model: PF55HD6					
Display Area: 1211×682					
Unit Size: 1366×837×50.1					
Package Size: 1525×1016×214					
Vesa Holes: 400×400					
Net Weight: 39.7kg					
Gross Weight: 49.7kg					
Power Consumption: 85watts					
Speaker Type: 5W, 8Ω (x2)					

Panel:
Resolution: 1920×1080
Aspect Ratio: 16:9
Brightness (CD/M2): 450
Colour: 16.7M
Viewing Angle: 178°
Contrast Ratio: 5000:1
AV Inputs:
Video: HDMI, VGA,
Audio: Audio Socket (3.5mm)
Computer:
Media Resolution: 1920×1080/1080×1920
Internal Memory: 6GB
CPU: Dual-Core Cortex-A9 @1.6GHz
GPU: Mali-400 MP4 @400MHz
RAM: 1GB DDR3
ROM: 8GB NAND
USB: USB2.0 HOST (x2)
LAN: 10/100M Ethernet (Network version screen only)
Wi-Fi: 802.11b/g/n (Network version screen only)
OS: Android
Graphic Engine: OpenGL ES 1.1/2.0, OpenVG 1.1

Environmental:
Operating Temperature: 0°C to 50°C
Storage Temperature: -30°C to 60°C
Operating Humidity: 10% to 80%
Storage Humidity: 5% to 95%
Media Formats:
Video: MPG, AVI, MP4, RM, RMVB, TS
Audio: MP3, WMA
Image: JPG, GIF, BMP, PNG
Accessories:
Included: Wall Mount, Scheduling Software, Remote Control, Key, User Manual
Optional: Network Upgrade, Touch Screen Upgrade, Special Wall Mount, Floor Stand/Trolley, Ceiling Mount, Table Stand
Cloud Based CMS Software:
Contact Us to request a free trial