

INTERACTIVE  
DISPLAYS  
IRELAND

# Dual-Sided Freestanding Totem

Available Sizes

55" (Other sizes on request)



## Overview

Our Dual-sided Freestanding totems are designed with the needs of Hospitality, retail and commercial settings in mind. Robust Enclosure, a smart temperature control system, and high-definition capabilities, these monitors are the ideal choice for businesses that demand quality and reliability.

## Key Features



**24/7 Commercial Use**



**Integrated android player**



**L.E.D Backlight**



**Customizable**



**Different Content each side**



**Network Upgrade**



**3 Years  
Warranty**

**IRISH  
OWNED**



### Network Upgrade

For a small charge you can also upgrade your screen to 4G networked, allowing you to remotely update your screen via 4G. LAN and WiFi come as standard



### 24/7 Commercial Use

Built using commercial grade LCD panel & LED backlights, these displays can be in constant 24/7 use for over 70,000 hours. They have no external buttons or controls to avoid tampering.



### Integrated Android player

Update content via USB plug and play or upgrade to a networked version without needing any additional hardware thanks to the two integrated Android media players.



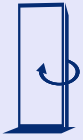
### LED Backlight

Thanks to their LED backlight these displays offer improved brightness and contrast as well as drastically improving their lifespan & reducing their power consumption.

## Interactive Displays Ireland

 Dromone, Oldcastle, Co. Meath, Ireland

 0449672855  [www.interactivedisplays.ie](http://www.interactivedisplays.ie)



### Different Content each side

With two integrated Android media players, these displays can output two separate signals simultaneously. This allows different content to be displayed on each screen at the same time.



### Robust Enclosure

These displays are designed to be used in public spaces with high footfall, featuring a tempered glass front, mild steel enclosure and robust monolith design to protect against potential damage. They can also be bolted to the ground for additional security.



### Customization Available

Although these displays come in piano black as standard, they can be customised to meet the colour requirements of any project using a bespoke vinyl wrap. Logos & other styles can also be added upon request.



### Internal Locker

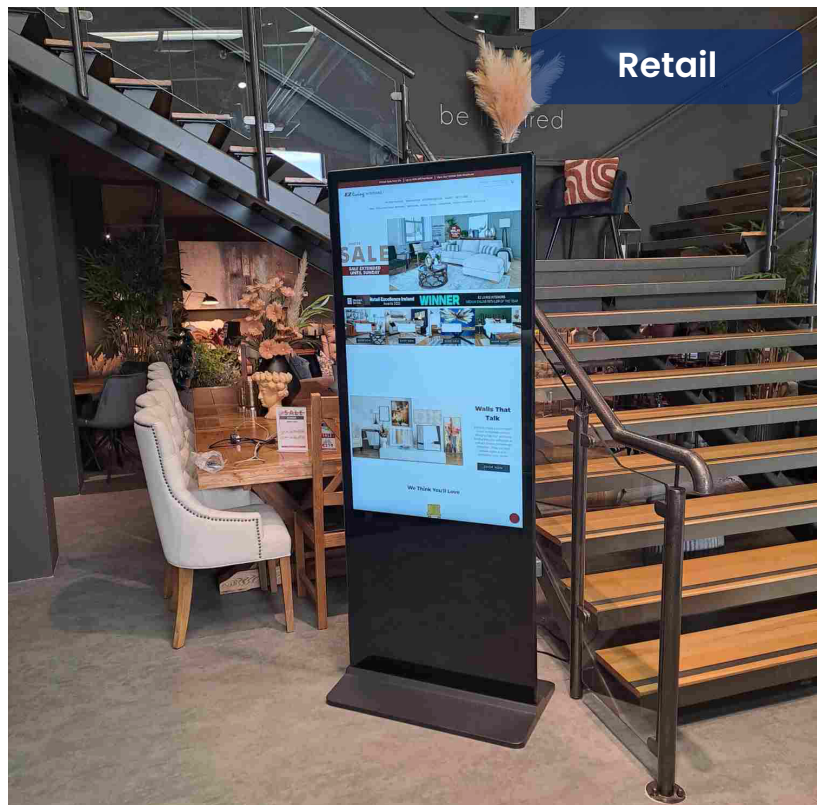
Should you need to run the screen from an external source, there is space to fit a small PC or media player inside the lockable compartment in the rear of the display. This can then be connected to the display using the HDMI input or the VGA and 5mm audio jack inputs.



### Easy USB Updates

Plug and play is the most straightforward way to upload content to the screen. Simply load images and videos onto a USB stick, insert into the display, wait for your content to copy over, and then remove. Your images and videos will now play in a continuous loop.

# Application



# Specifications

55"

**Model:** L55HD8D2

**Display Area:** 682.4×1211.6

**Unit Size:**843x1979x138

**Package Size:** 2113x980x585

**Footprint (WxD mm):** 843×450

**Net Weight:** 131kg

**Gross Weight:** 152kg

**Power Consumption:** 250watts

## Panel:

**Resolution:** 1920×1080

**Aspect Ratio:** 16:9

**Brightness (CD/M2):** 450

**Colour:** 16.7M

**Viewing Angle:** 178°

**Contrast Ratio:** 4000:1

## Environmental:

**Operating Temperature:** 0°C to 40°C

**Storage Temperature:** -20°C to 60°C

**Operating Humidity:** 10% to 90%

**Storage Humidity:** 0% to 95%

## Computer:

**Media Resolution:** 1920×1080/1080×1920

**CPU:** Quad-Core ARM Cortex A17, 1.6GHz

**GPU:** Quad-Core ARM Mali-T764

**RAM:** 2GB DDR3

**ROM:** 8GB eMMC

**USB:** 1 x USB (OTG/HOST), 4 x USB (HOST)

**LAN:** 100M/1000M Ethernet (Network Version Only)

**Wi-Fi:** 802.11b/g/n/ac (Network Version Only)

**OS:** Android 7.1

**Graphic Engine:** OpenGL ES 1.1/2.0/3.0/3.1, OpenCL 1.1, Renderscript, Direct3D 11.1

## AV Inputs:

**Video:** HDMI, VGA,

**Audio:** Audio Socket (3.5mm)

**Speaker Type:** 2W, 4Ω (x2)

## Media Player:

**Video:** MPG, AVI, MP4, RM, RMVB, TS

**Audio:** MP3, WMA

**Image:** JPG, GIF, BMP, PNG

## Accessories:

**Included:**Scheduling Software, Remote Control, Key, User Manual

**Optional:**Network Upgrade, One Side Touch Screen Upgrade, Double Sided Touch Screen Upgrade

## Cloud Based CMS Software:

Contact Us to request a free trial