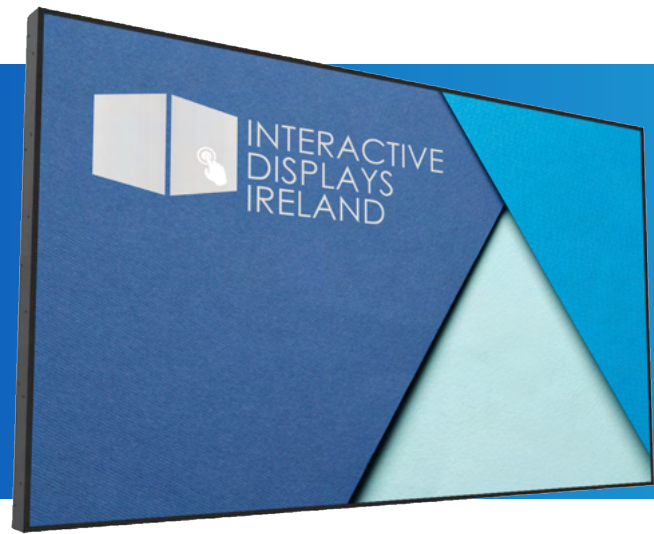


Ultra High-Bright Window Display TNI

Available Sizes

43", 49", 55", 65"



Overview

Featuring a remarkable brightness of 3500cd/m², these displays offer an excellent platform for window advertising. Their specially designed ultra-high brightness panels can conquer surface temperatures up to 110°C without succumbing to any blackening fault, which is essential for exterior-facing window displays that face direct exposure to sunlight.

Key Features



Android Media Player



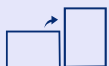
24/7 Commercial Use



Blackening Resistant



Sleek Thin Bezel



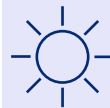
Adaptable Orientation



Sunlight readable



Sunlight Readable



Designed for shopfront windows, these displays feature commercial grade ultra-high brightness panels (3,500cd/m²) that are up to 10 times brighter than domestic televisions. This ensures that content really stands out, even the brightest direct sunlight.

Integrated Media Player



The integrated Android media player allows you to easily update on-screen content via USB plug and play. Alternatively, upgrade your screen to be networked without needing any additional hardware to unlock our cloud-based CMS software. Third-party software can be installed instead if required.

Sleek Thin Bezel



The narrow bezel gives these displays a stylish, modern aesthetic, but also means maximum attention is drawn to the on-screen content for high impact messaging.

Interactive Displays Ireland

 Dromone, Oldcastle, Co. Meath, Ireland

 0449672855  www.interactivedisplays.ie



Commercial Grade Panel

Fitted with a commercial grade panel, with a lifespan of 70,000 hours, and using high quality components ensures that the high brightness monitor displays can be in constant use 24/7.



24/7 usage

Built using commercial grade LCD panel & LED Backlights, these displays can be in constant 24/7 use for over 70,000 hours. they have no external buttons or controls to avoid tampering



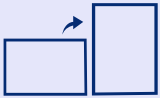
Temperature Control system

The responsive internal airflow system keeps the panel and other internal components at optimum working temperature. This ensures a long and reliable life for your screen, even when used continuously in outward-facing windows.



Stylish Lightweight enclosure

By utilising aluminium for the front frame of the enclosure, these displays have a high thermal conductivity for rapid heat loss and are lightweight for easy installation. This is enhanced by the integrated rear handles, which makes install even easier. The back case is made of robust mild steel for added durability.



Adaptable Orientation

high-quality display experience with exceptional viewing angles in portrait & Landscape orientation. With no blackening defects and vivid colours, it offers clarity and crispness for the user.



Ambient Light sensor

These displays include an external ambient light sensor for use when required. This ensures the screen is always operating at a suitable brightness for its environment. The external nature of this sensor also enables seamless kiosk integration.



Ultra resistant to blackening

When dealing with direct sunlight most LCD panels will overheat and the blackening on the panel will occur, we use a special ultra-high brightness panel that can withstand surface temperatures up to 110°C with no blackening defect occurring making this the number one choice for Digital Signage in window displays.

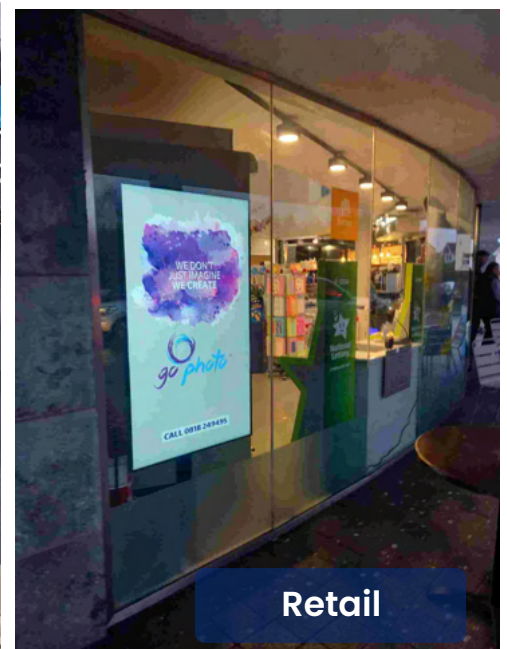
Application



Hospitality



Retail



Retail

Specifications

43"

49"

55"

65"

Model: MOY-UHBTNlxx

Display Area: 941.18×529.42

Bezel Size (mm): 8.8

Unit Size: 965×533×85.3

Package Size: 1120×710×230

Vesa Holes: 500×300

Net Weight: 22kg

Gross Weight: 28kg

no. of Handles: 4

Power Consumption: 210watts

Contrast ratio: 1100:1

43"

49"

55"

65"

Model: UHB49HD8

Display Area: 1073.8×604

Bezel Size (mm): 8.8

Unit Size: 1097.2×627.4×85.3

Package Size: 1250×780×230

Vesa Holes: 500×300

Net Weight: 24kg

Gross Weight: 31kg

no. of Handles: 4

Power Consumption: 230watts

Contrast ratio: 1300:1

43"

49"

55"

65"

Model: UHB55HD8

Display Area: 1209.6×680.4

Bezel Size (mm): 8.8

Unit Size: 1232.34×703.82×85.3

Package Size: 1420×880×260

Vesa Holes: 400×400

Net Weight: 31kg

Gross Weight: 40kg

no. of Handles: 4

Power Consumption: 240watts

Contrast ratio: 1000:1

Specifications

43"

49"

55"

65"

Model: UHB65HD8

Display Area:1428.5×803.5

Bezel Size (mm): 18

Unit Size:1468.6×843.6×85

Package Size: TBC

Vesa Holes: 400×400

Net Weight:TBC

Gross Weight:TBC

no. of Handles:4

Power Consumption: TBC

Contrast ratio: TBC

Panel:

Resolution: 1920×1080

Aspect Ratio: 16:9

Brightness (CD/M2): 3500

Colour: 16.7M

Viewing Angle: 178°

Blackening Defect Free: Up to 110°C (230°F)

Environmental:

Surface Panel Temperature: 110°C

Operating Temperature: 0°C to 50°C

Storage Temperature: -30°C to 60°C

Operating Humidity: 10% to 80%

Storage Humidity: 5% to 95%

Computer:

Media Resolution: 1920×1080/1080×1920

GPU: Quad-Core ARM Mali-T764

CPU: Quad-Core ARM Cortex A17, 1.6GHz

RAM: DDR3 2GB

USB: 1 x USB (OTG/HOST), 1 x USB (HOST)

LAN: 100M/1000M Ethernet

Wi-Fi: 802.11b/g/n (Network version screen only)

Graphic Engine: OpenGL ES 1.1/2.0/3.0/3.1, OpenCL 1.1, Renderscript, Direct3D 11.1

OS: Android 7.1

AV Inputs:

Video: HDMI, VGA

Audio: Audio Socket (3.5mm)

Speaker Type: 2W, 4Ω (x2)

Media Player:

Video: MPG, AVI, MP4, RM, RMVB, TS

Audio: MP3, WMA

Image: JPG, GIF, BMP, PNG

Accessories:

Included:Scheduling Software, Remote Control, Key, User Manual

Optional:Network Upgrade, One Side Touch Screen Upgrade, Double Sided Touch Screen Upgrade