

# Outdoor LED Video Wall

Available Pixel Pitch  
P6/P10



## Overview

The Outdoor LED Video Wall boasts an exceptional brightness level of 6,000cd/m<sup>2</sup>, providing unparalleled visibility. Even in direct sunlight, the display is easily readable, capturing the attention of viewers and ensuring your content is always prominent. Advanced SMD-LED technology produces top-tier image quality across the seamless display, making it sure to leave a lasting impression.

## Key Features



**Remote Cloud Updates**



**Optimized Viewing Distance**



**Ambient Light Sensor**



**Light & Slim Design**



**Stunning Image Quality**



**IP Rated Weatherproof**



### Remote Cloud Updates



Take complete control of your LED Video Wall's content with our CMS system. Publish and monitor your content from anywhere in the world via our online portal.

### Easy Installation



Their light and compact design as well as magnetic modules, positioning pins and simple cabinet structure make them ideal for either permanent installations or rental jobs.

### IP Rated Weatherproof



Designed with a robust aluminium enclosure to give protection from the all wet weather conditions. The outer casing is IP-rated which means it also keeps out airborne swarf, dust and other particles.

## Interactive Displays Ireland

 Dromone, Oldcastle, Co. Meath, Ireland

 0449672855  [www.interactivedisplays.ie](http://www.interactivedisplays.ie)

## Ambient Light Sensor



Ensure that the brightness of your video wall is always at an optimum level. This feature is ideal for displays that are road facing; which need to have variable brightness depending on the time of day.

## Optimised Outdoor View Distance



The Outdoor LED Video Walls are designed for longer viewing distances with multiple pixel pitch options depending on your budget and requirements.

## Front & Rear Maintenance



Through an intuitive and easy-to-use maintenance system the LED Video Wall can be serviced from either the front of the display or the rear. The LED modules can be removed quickly and efficiently for convenient maintenance.

## Stunning Image Quality



State of the art SMD-LED technology delivers stunning image quality across the seamless display; certain to garner attention. With advanced video processing technology to produce accurate and vibrant colours with no distortion.

## Light & Slim Design



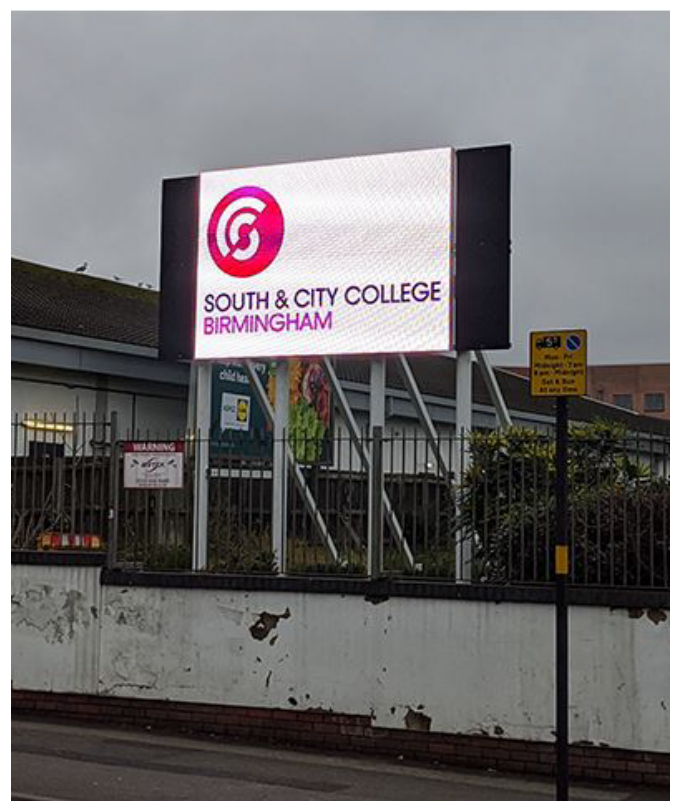
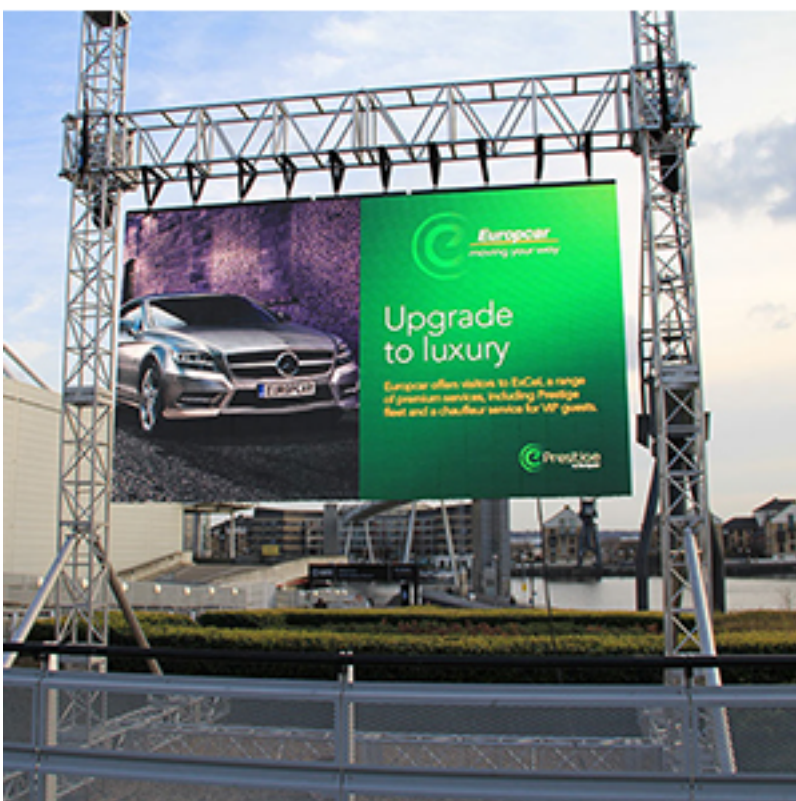
Each cabinet weighs 28kg and has a depth of 100mm making these screens much easier to install. The lighter weight reduces stress on the mounting structure.

## High Brightness



With an incredible brightness level of 6,000cd/m<sup>2</sup> the LED Video Wall has outstanding visibility. The display is sunlight readable even in direct sunlight instantly catching attention from viewers ensuring your content is always seen.

# Application



# Specifications

P6

P10

LED Type: SMD 2727 3-in-1  
Pixel Configuration: 1R1G1B  
Brightness (Calibrated):  $\geq 6,000$  cd/m<sup>2</sup>  
Refresh Rate:  $\geq 1920$  Hz  
Contrast Ratio: 6000:1  
Viewing Angle: 140°  
Processing: 14 Bit  
Frame Rate: 14 Bit  
Maintenance: Front & Rear Access

P6

P10

LED Type: SMD 2727 3-in-1  
Pixel Configuration: 1R1G1B  
Brightness (Calibrated):  $\geq 6,000$  cd/m<sup>2</sup>  
Refresh Rate:  $\geq 1920$  Hz  
Contrast Ratio: 6000:1  
Viewing Angle: 140°  
Processing: 14 Bit  
Frame Rate: 14 Bit  
Maintenance: Front & Rear Access

## Cabinet:

Module Size (mm): 480×320  
Panel Size (mm): 960×960×120  
Net Weight (kg): 28kg

## Pixel Pitch:

Pixel Pitch (mm): 6.67  
Pixel Pitch (mm): 10

## Environmental:

IP Rating - Front: IP65  
IP Rating - Rear: IP54  
Operating Temperature: -20°C to +50°C  
Operating Humidity: 10% to 95%  
Lifetime: 100,000 Hours

## Power:

Input Voltage: AC220/110  $\pm$  10%, 47~63Hz  
Average Power Consumption: 265W  
Maximum Power Consumption: 750W